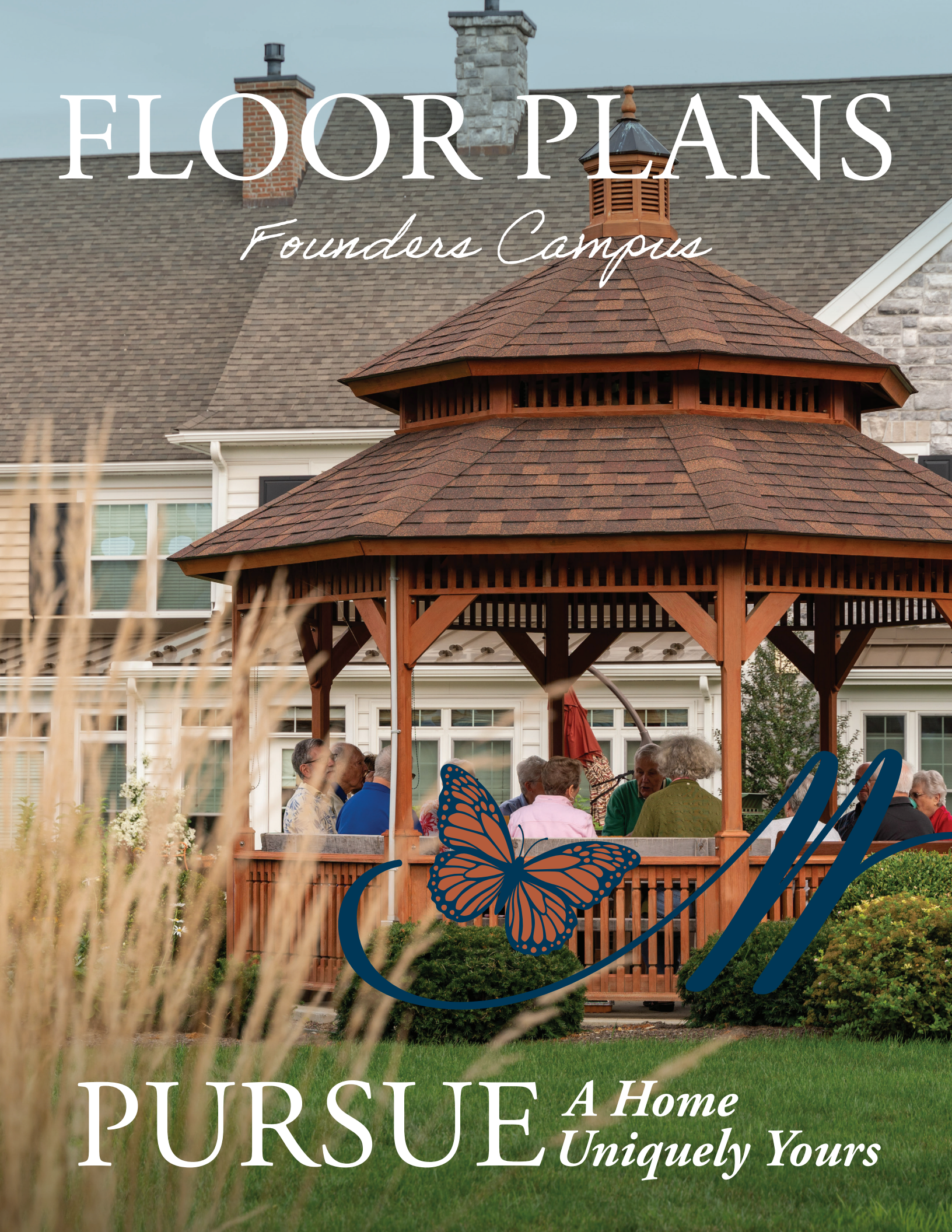


FLOOR PLANS

Founders Campus



PURSUE *A Home
Uniquely Yours*



Moravian Manor Communities features carriage homes, townhomes, and apartments on its Founders Campus.

All homes include:

- 24-hour security
- 24-hour resident alert system
- 24-hour emergency maintenance
- Smoke and carbon monoxide detectors
- Interior/exterior building maintenance (including appliances)
- Tobacco-free grounds
- Pet-friendly
- Active engagement in numerous resident committees, educational, and social programs.

Moravian Avenue Cottages

MODEL	SQ. FT.	BR	BA	BONUS	PAGE
Two Bedroom	1,400	2	1.5		5

Hendricks Place Townhomes

Model A	2,833	2	3	DEN, BONUS ROOM	7
Model B	2,609	2	3	DEN, BONUS ROOM	8
Model C	2,726	2	3	DEN, BONUS ROOM	9

Garden Court Apartments

One Bedroom	790	1	1		11
Classic	1,100	2	2		12
Select	1,145	2	2		13
Premier A	1,260	2	2		14
Deluxe	1,605	2	2	DEN	15

Manor Greene Apartments

One Bedroom	900	1	1.5		17
Two Bedroom	1,200	2	1.5		18

Founders CAMPUS





MORAVIAN AVENUE COTTAGES

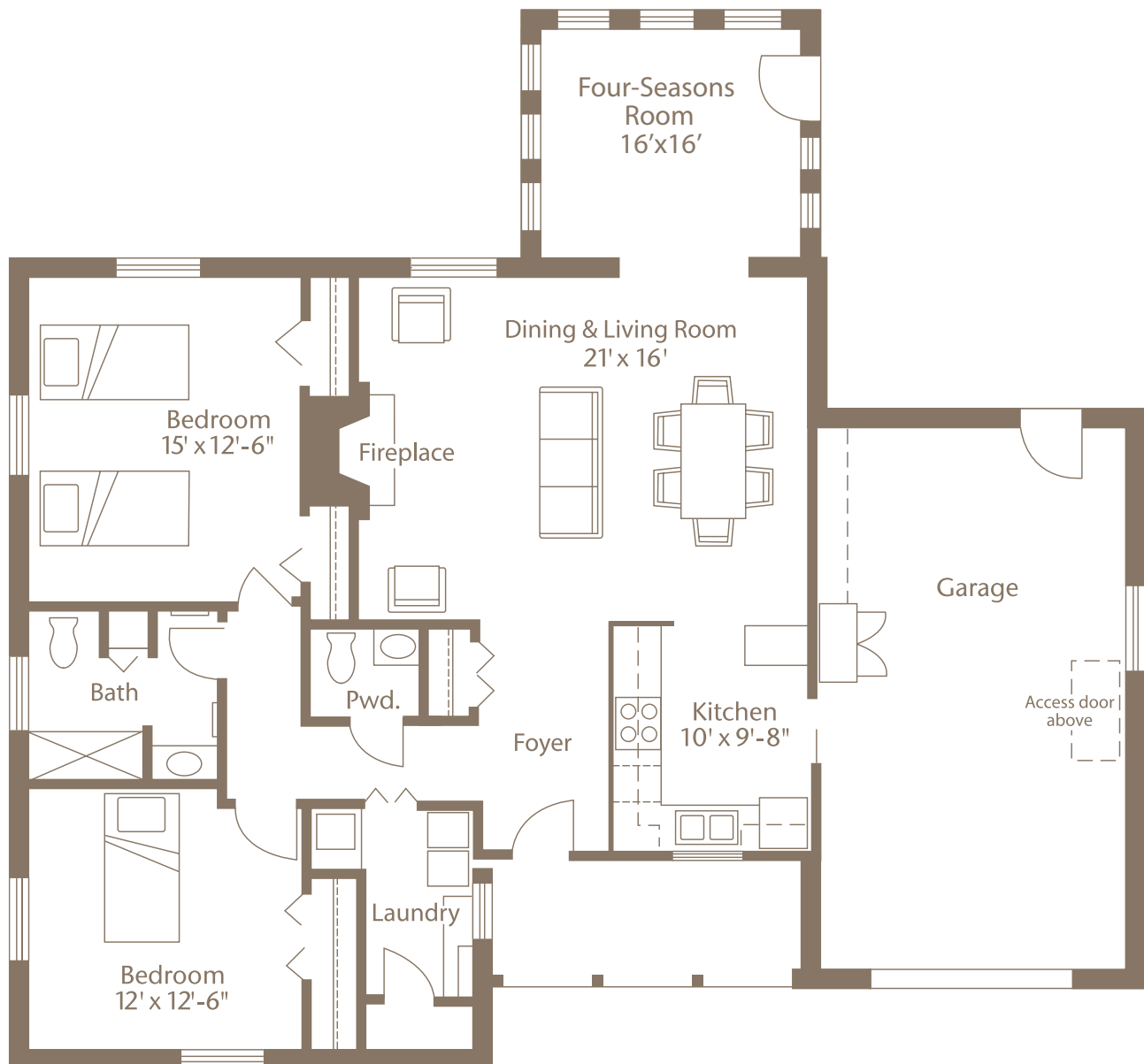
These free-standing charming, brick cottages set on a quiet, tree-lined street, are just steps from the McCloud Campus Center at the heart of the Founders Campus.

The Moravian Avenue Cottage floor plans include these quality features:

- One-floor living
- Quality fixtures and cabinetry
- Fully equipped kitchen complete with:
 - Dishwasher
 - Electric range
 - Refrigerator
 - Microwave
 - Luxury vinyl tile floors
- Bedroom with wall-to-wall carpet
- Bathroom that includes:
 - Barrier-free shower
 - Luxury vinyl tile floors
- Laundry room with washer and dryer
- Private patio
- Four-Seasons Room
- Fireplace
- Plenty of storage space
- Efficient gas heating and electric A/C system
- Private driveway with attached one-car garage
- Mail delivered right to your doorstep
- Ample electrical, telephone and cable outlets throughout

Two Bedroom

1,400 sq. ft. / 2 Bedroom / 1.5 Bath





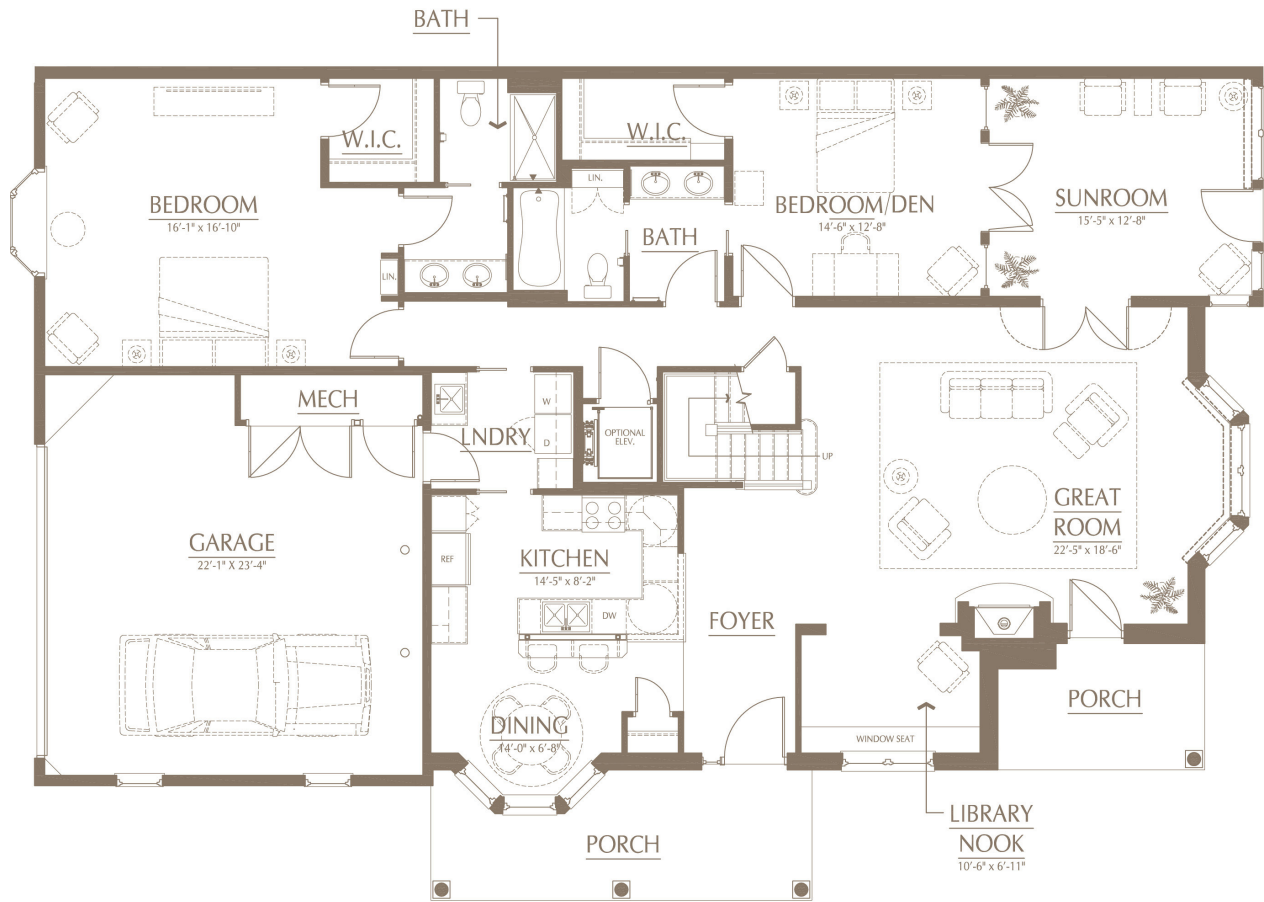
HENDRICKS PLACE TOWNHOMES

These distinctive townhomes are set on a tranquil cul-de-sac and designed around a classic neighborhood courtyard in an adjacent Founders Campus neighborhood.

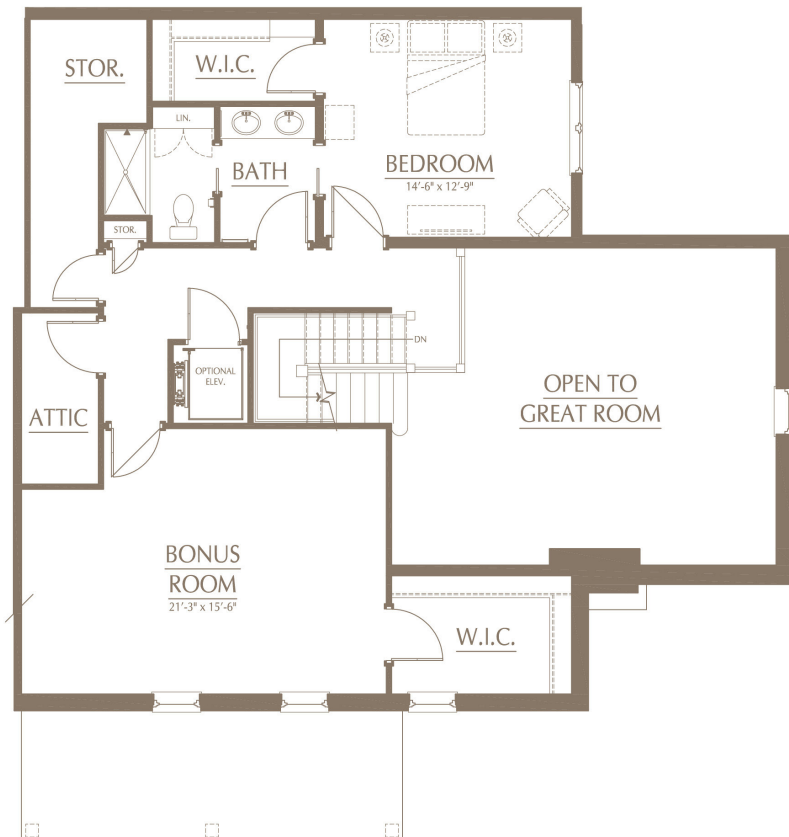
The Hendricks Place Townhome floor plans include these quality features:

- Two-story homes with all amenities on first floor and bonus space on the second floor
- 9' ceilings
- Quality fixtures and cabinetry
- Fully equipped eat-in kitchen complete with:
 - Dishwasher
 - Electric range
 - Refrigerator
 - Microwave
 - Hardwood floors
- Two bedrooms with a den
- En suite bedroom with wall-to-wall carpet and walk-in closets
- Bathroom that includes:
 - Barrier-free shower
 - Luxury vinyl tile floors
- Laundry room with washer and dryer
- Bonus room
- Covered front porch
- Sunroom with patio
- Great room with a gas fireplace
- Abundant storage space
- Efficient gas heating and electric A/C system
- Two-car garage
- Ample electrical, telephone and cable outlets throughout

HENDRICKS PLACE TOWNHOMES



SECOND FLOOR



Model A

2,833 sq. ft. / 2 Bedroom / Den / Bonus Room / 3 Bath

First Floor	1,907 sq. ft.
Second Floor	926 sq. ft.
Garage	516 sq. ft.
Sunroom	198 sq. ft.

HENDRICKS PLACE TOWNHOMES

Model B

2,609 sq. ft. / 2 Bedroom / Den /
Bonus Room / 3 Bath

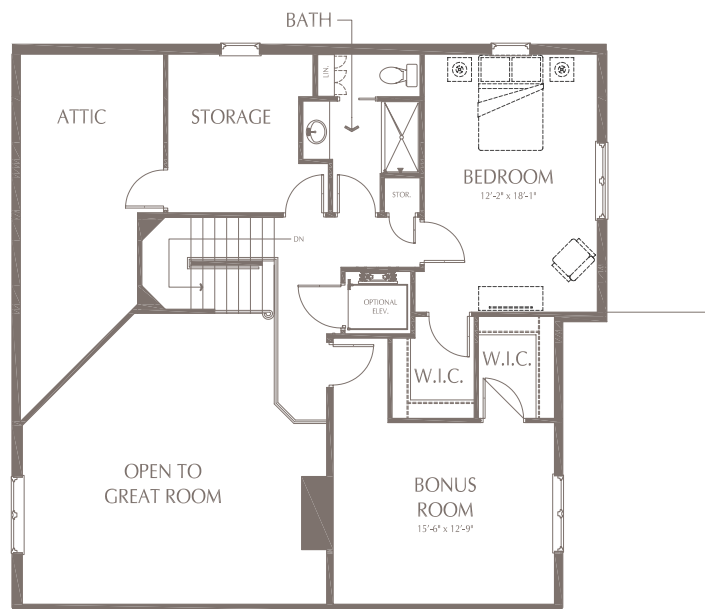
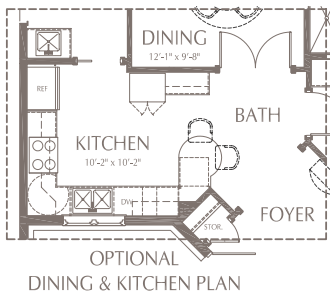
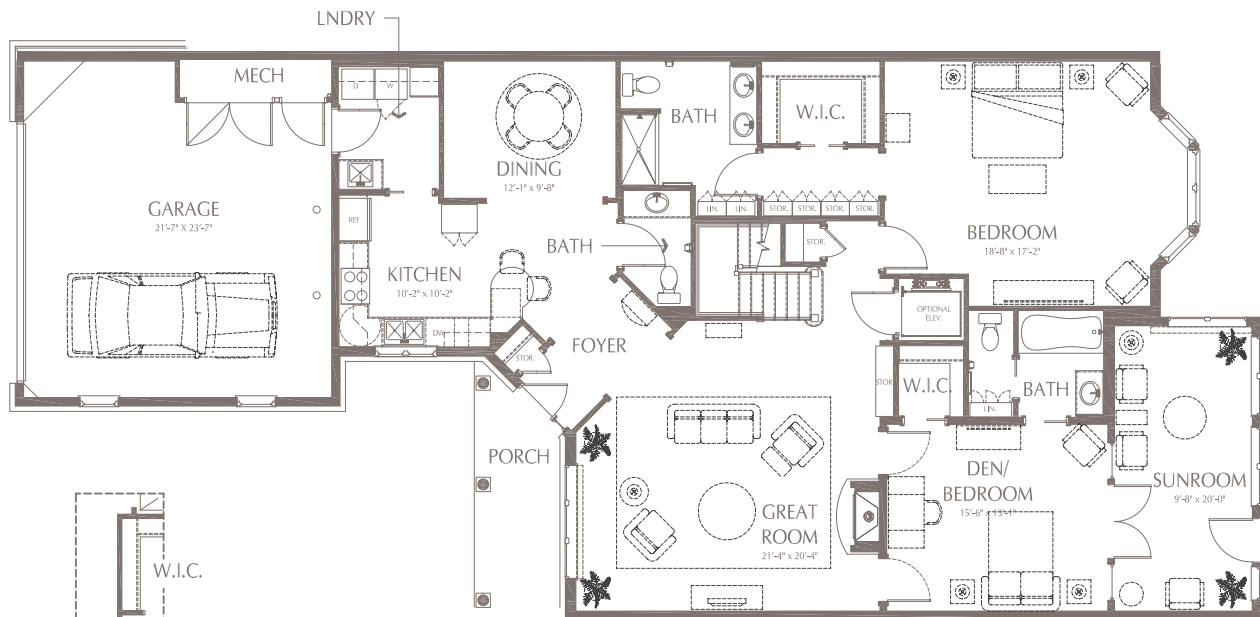
First Floor 1,803 sq. ft.
Second Floor 806 sq. ft.
Garage 500 sq. ft.
Sunroom 178 sq. ft.



Model C

2,726 sq. ft. / 2 Bedroom / Den /
Bonus Room / 3 Bath

First Floor	1,866 sq. ft.
Second Floor	860 sq. ft.
Garage	509 sq. ft.
Sunroom	193 sq. ft.



SECOND FLOOR



GARDEN COURT APARTMENTS

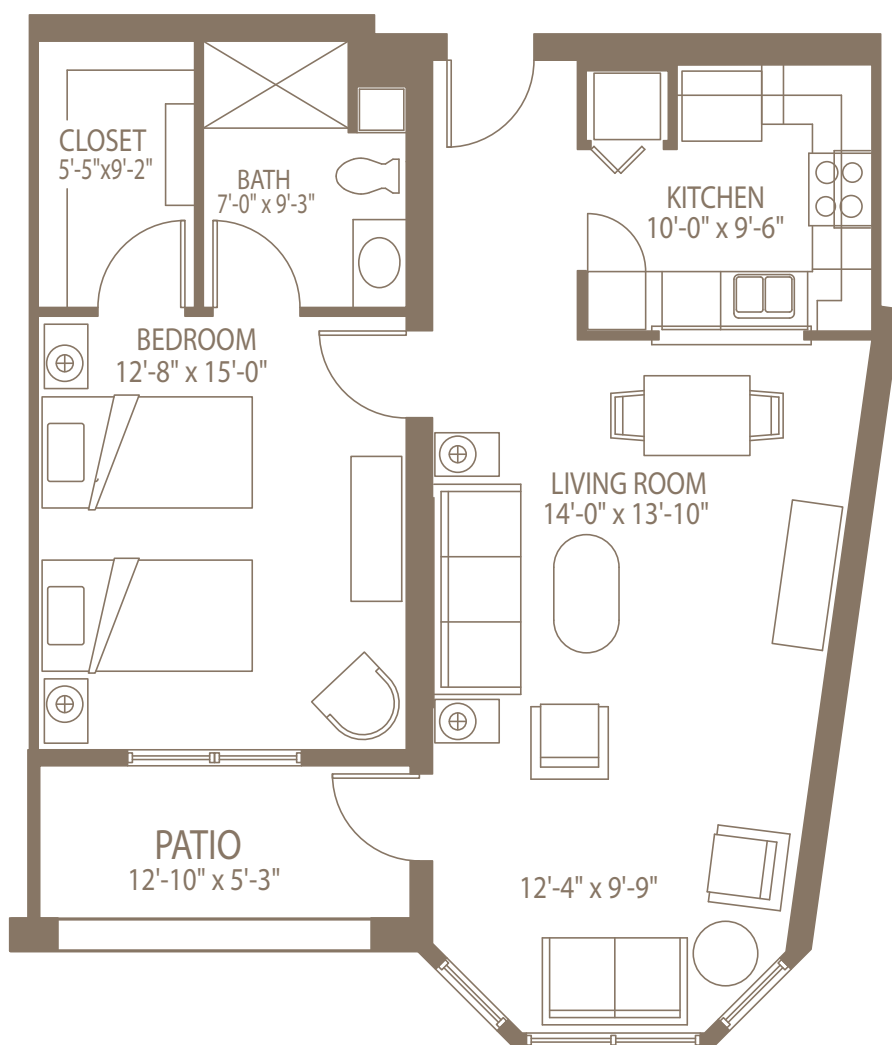
The Garden Court Apartments, located in a two-story building, are connected to the McCloud Campus Center at the heart of the Founders Campus, with access to dining, community spaces, underground parking, and more.

The Garden Court floor plans include these quality features:

- One-floor living
- Fully equipped kitchen complete with:
 - Dishwasher
 - Electric range
 - Refrigerator
 - Microwave
 - Luxury vinyl tile floors
- En suite bedroom with wall-to-wall carpet and walk-in closet
- Bathroom that includes:
 - Barrier-free shower
 - Luxury vinyl tile floors
- Two-bedroom floor plans include a second full bathroom
- Stackable washer and dryer
- Private patio or balcony (available in most apartments)
- Underground parking for one car
- Secure storage cage in lower level
- Efficient gas heating and electric A/C system
- Ample electrical, telephone and cable outlets throughout

One Bedroom

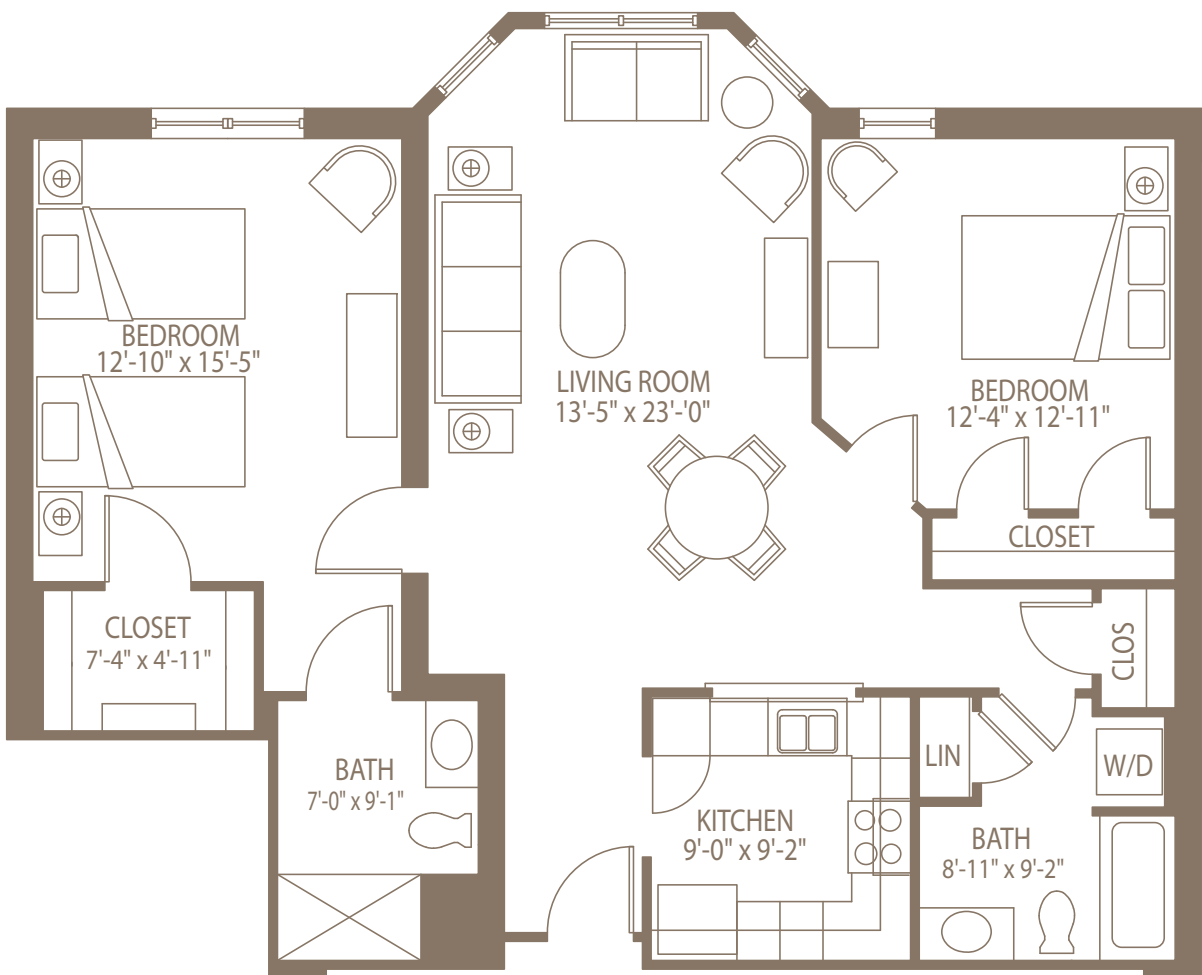
790 sq. ft. / 1 Bedroom / 1 Bath



Classic

1,100 sq. ft. / 2 Bedroom / 2 Bath

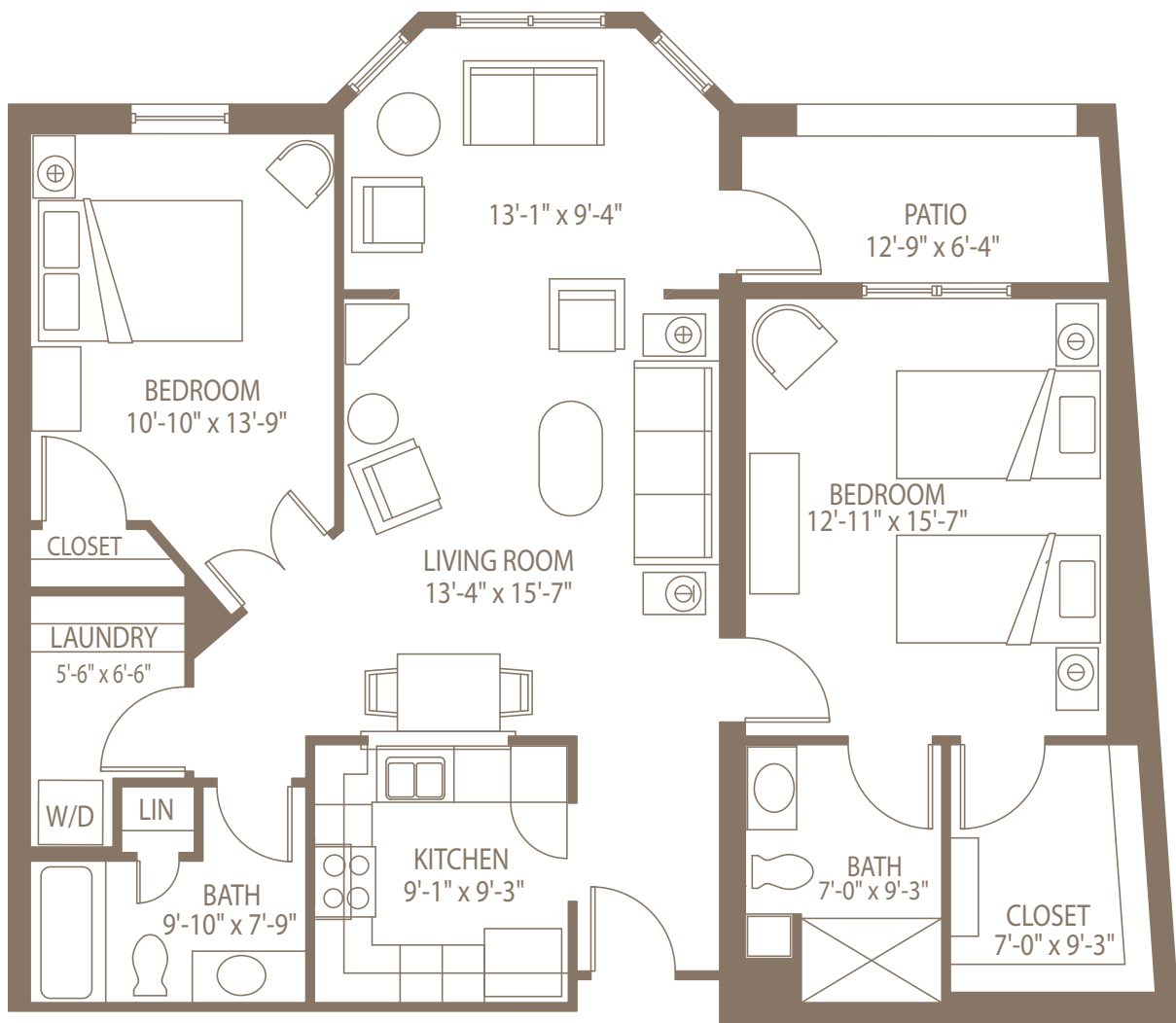
Additional Classic floor plans available upon request



Select

1,145 sq. ft. / 2 Bedroom / 2 Bath

Additional Select floor plans available upon request



Premier A

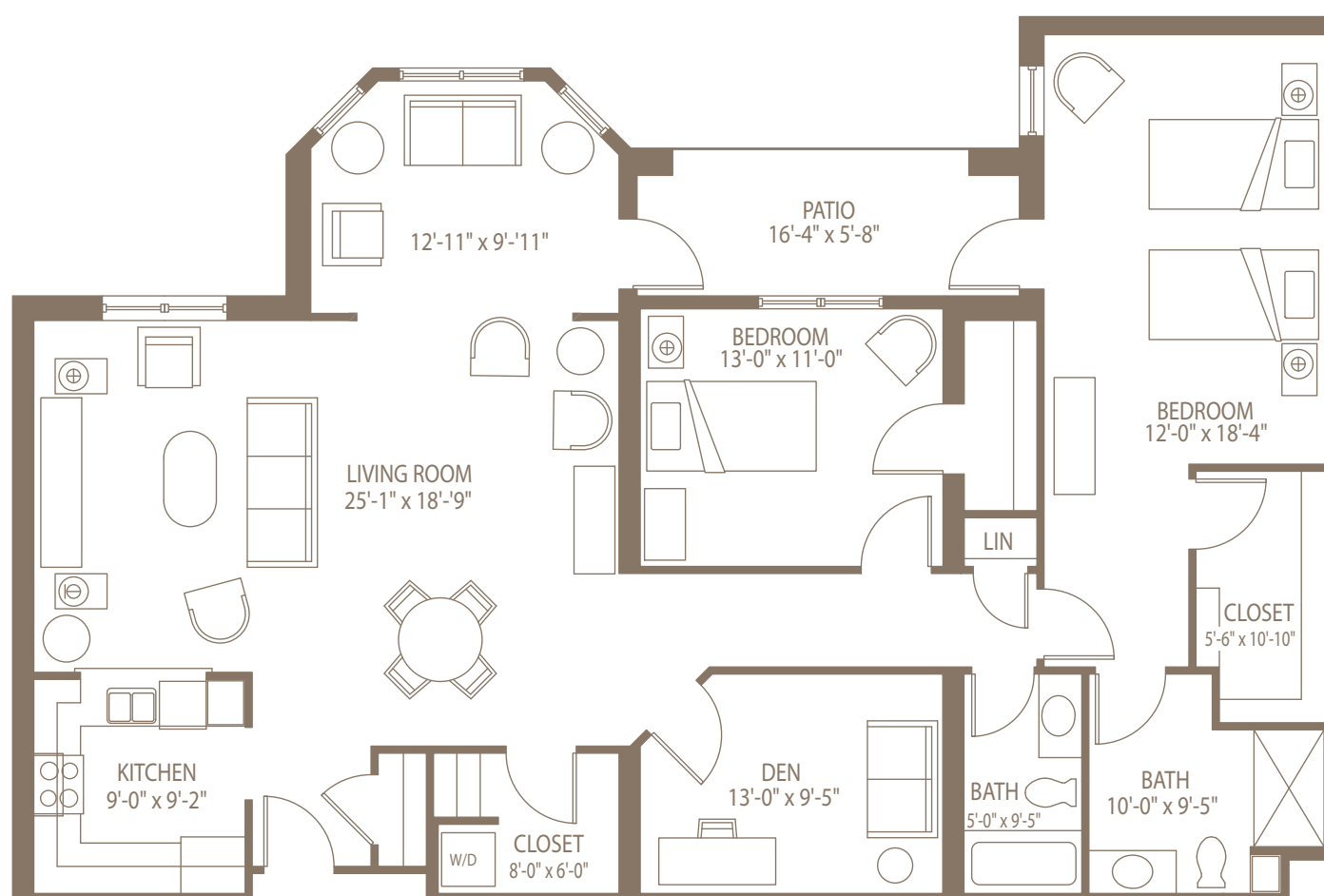
1,260 sq. ft. / 2 Bedroom / 2 Bath

Additional Premier floor plans available upon request.



Deluxe

1,605 sq. ft. / 2 Bedroom / Den / 2 Bath





MANOR GREENE APARTMENTS

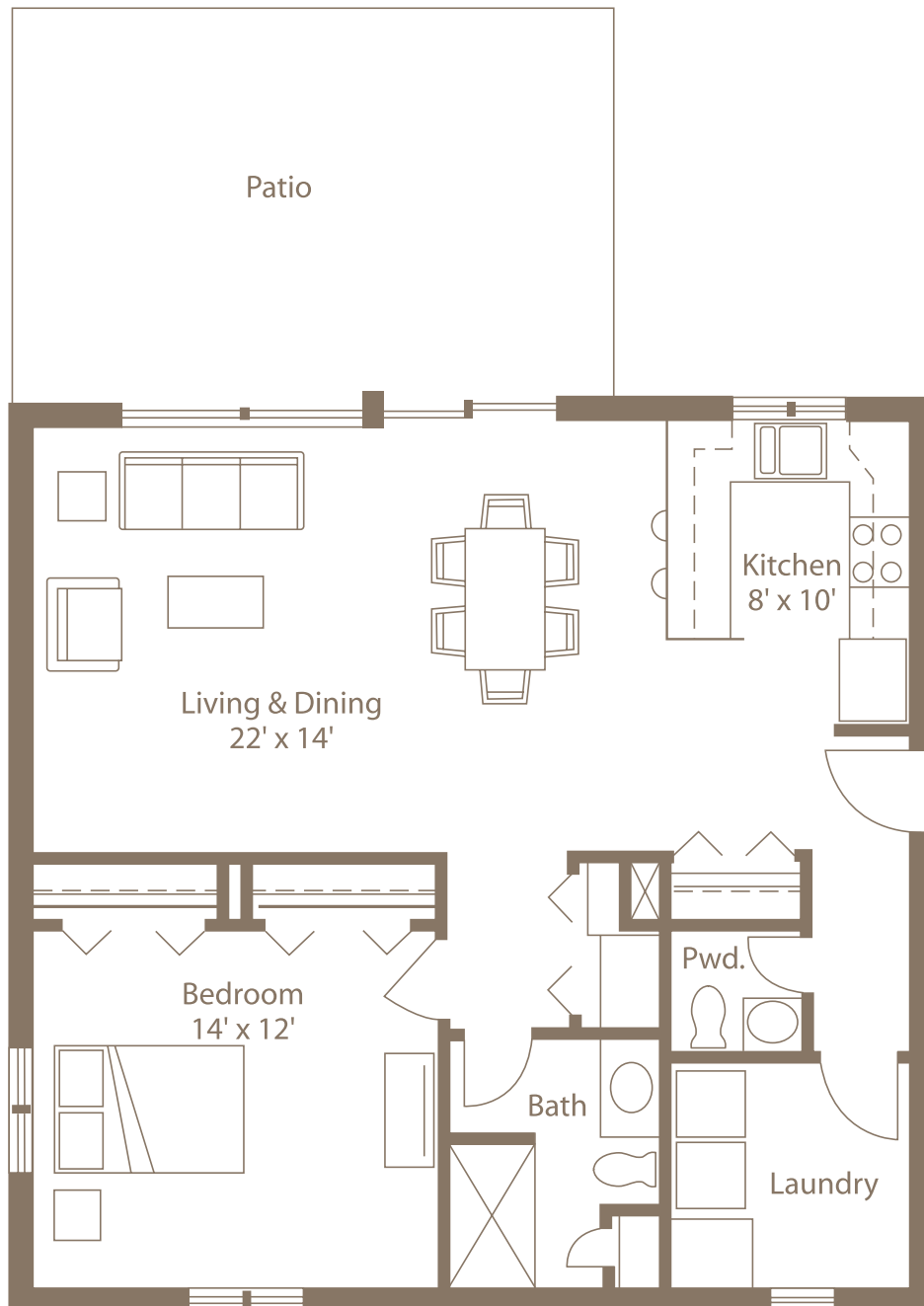
Manor Greene Apartments, set in two-story apartment buildings with six to eight apartments each, are serenely set by the woods and walking paths, and outdoor recreational area, just steps from the McCloud Campus Center.

The Manor Greene Apartments include these quality features:

- One-floor living with unique open floor plan
- Fully equipped kitchen complete with:
 - Dishwasher
 - Electric range
 - Refrigerator
 - Microwave
 - Luxury vinyl tile floors
- One and two bedrooms
- Spacious laundry room with washer and dryer, utility sink and storage
- Wall-to-wall carpet in bedrooms and living areas
- Luxury vinyl tile floors in bathrooms
- Main bathroom includes:
 - Comfort height toilet
 - Barrier-free shower
 - Linen closet
- Windows on three sides of the apartment
- Private patio or balcony
- Efficient gas heating and electric A/C system
- Ample electrical, telephone and cable outlets throughout
- Parking outside each building near front door
- Optional carport (for an additional fee upon availability)

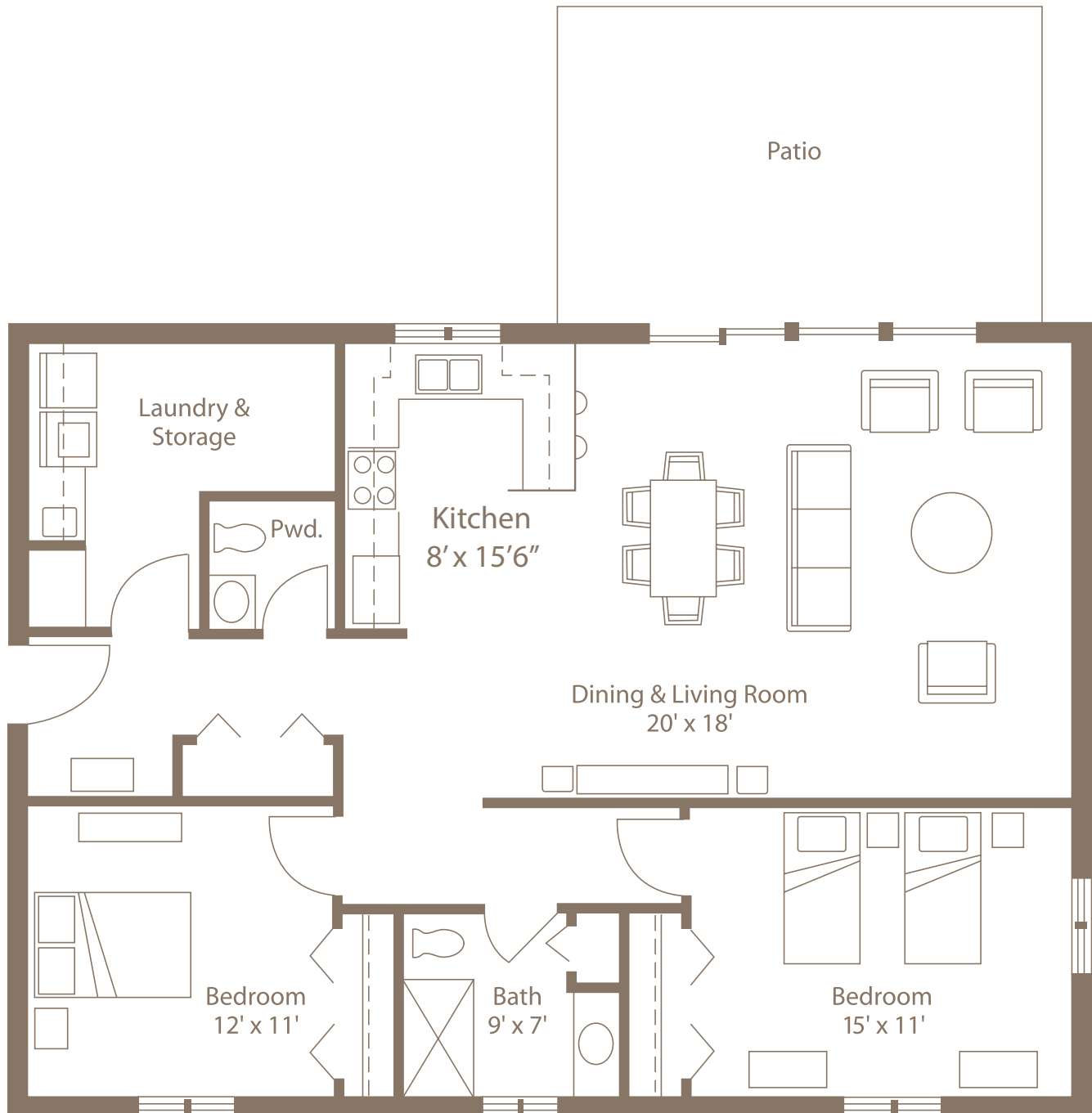
One Bedroom

900 sq. ft. / 1 Bedroom / 1.5 Bath




Two Bedroom

1,200 sq. ft. / 2 Bedroom / 1.5 Bath







MORAVIAN MANOR COMMUNITIES


 moravianmanorcommunities.org


Residential Living Sales Center

WARWICK WOODLANDS CAMPUS

 544 W. 6th Street
Lititz, PA 17543


 717-625-6151


 info@moravianmanor.org


 Open M-F, 8:00 AM-4:30 PM

Administration, Admissions & Health Services

FOUNDERS CAMPUS

 300 W. Lemon Street
Lititz, PA 17543

 717-626-0214

 admissions@moravianmanor.org



TOBACCO
FREE