

FLOOR PLANS

Warwick Woodlands Campus



PURSUE *A Home
Uniquely Yours*



Moravian Manor Communities features carriage homes, townhomes, and apartments on its Warwick Woodlands Campus.

All homes include:

- 24-hour security
- 24-hour resident alert system
- 24-hour emergency maintenance
- Smoke and carbon monoxide detectors
- Interior/exterior building maintenance (including appliances)
- Tobacco-free grounds
- Pet-friendly
- Active engagement in numerous resident committees, educational, and social programs.

Carriage Homes

MODEL	SQ. FT.	BR	BA	BONUS	PAGE
Bonfield	1,772	2	2		5
Forester/alley	1,955	2	2		6
Forester/street	1,908	2	2		7
Klein	2,771	3	3	LOFT	8
Lexington	2,854	3	3	LOFT	9
Saxony	1,945	2	2		10
Springs	2,198	2	2	DEN	11
Sturgis	2,114	2	2	DEN	12
Woodridge	3,049	4	3.5		13

Townhomes

Wilbur	3,280	4	3.5		14
--------	-------	---	-----	--	----

The Woods Apartments

Alden	1,040	1	1.5		17
Bomberger	1,222	1	1.5	DEN	18
Clair	1,397	2	2		19
Linden	1,592	2	2.5	DEN	20
Steinman	1,575	1	1.5	DEN	21
Tait	1,944	2	2		22
Zinzendorf	1,782	2	2.5		23

Warwick Woodlands CAMPUS





CARRIAGE HOMES & TOWNHOMES

Within a traditional neighborhood, our carriage homes and townhomes are set along quiet tree-lined streets. These distinctive homes are tastefully designed with nine different floor plans. Carriage Homes, with two to three bedrooms and two to three full baths, range from 1,772 - 2,854 sq. ft. Townhomes have 3,280 sq. ft., four bedrooms, and three full baths and a 1/2 bath.

These Carriage Homes and Townhomes include these quality features:

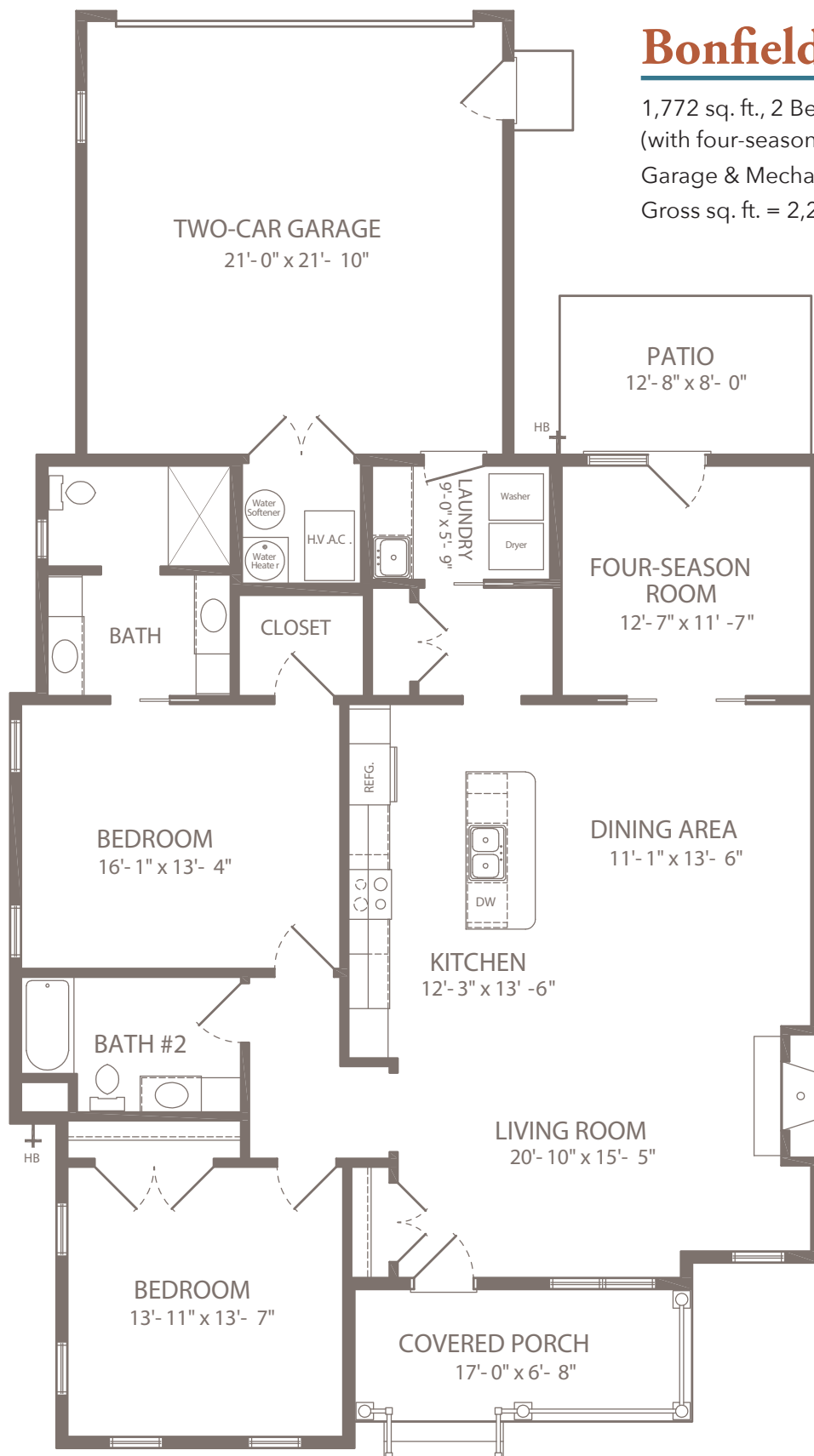
- Open concept living
- Fully equipped kitchen complete with:
 - French door dispensing refrigerator
 - Dishwasher
 - Kitchen island with dual sinks
 - Electric glass top range
 - Microwave
 - Pantry with roll-out shelves
- Gas fireplace in living room
- En suite bedroom with walk-in closet
- Bathroom that includes:
 - Comfort height toilet
 - Dual sinks
 - Barrier-free shower (grab bars optional)
 - Linen cabinet
- Laundry room complete with full-size side-by-side washer & dryer and utility sink
- Front porch with neighborhood charm
- Patio and four-season room
- Attached two-car garage with alley or street entrance
- Sound baffling between demising walls
- Ample electrical, telephone and cable outlets throughout

Bonfield

1,772 sq. ft., 2 Bedroom / 2 Bath, First Floor living space
(with four-season room) = 1,722 sq. ft.

Garage & Mechanicals = 517 sq. ft.

Gross sq. ft. = 2,239



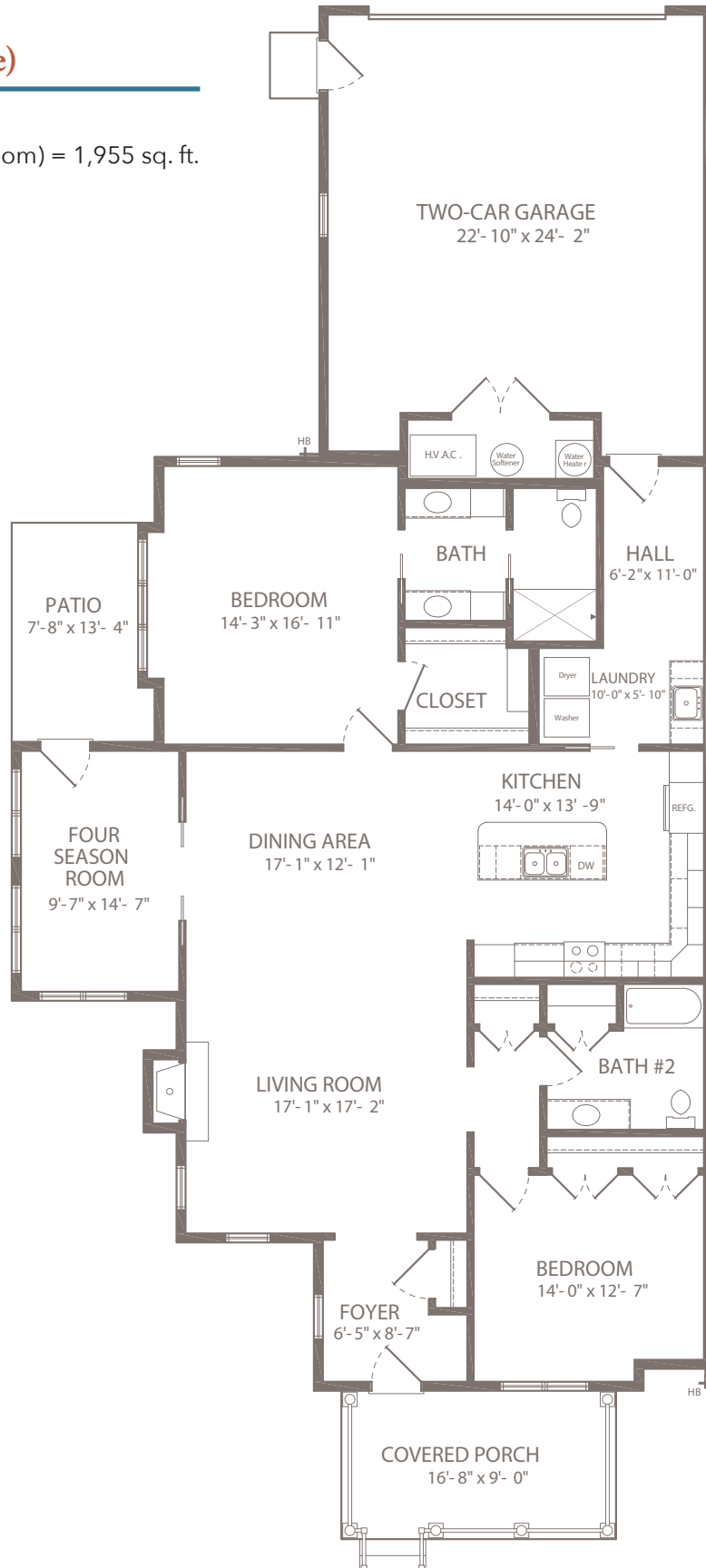
Forester (alley facing garage)

1,955 sq. ft., 2 Bedroom / 2 Bath

First Floor living space (with four-season room) = 1,955 sq. ft.

Garage & Mechanicals = 671 sq. ft.

Gross sq. ft. = 2,626



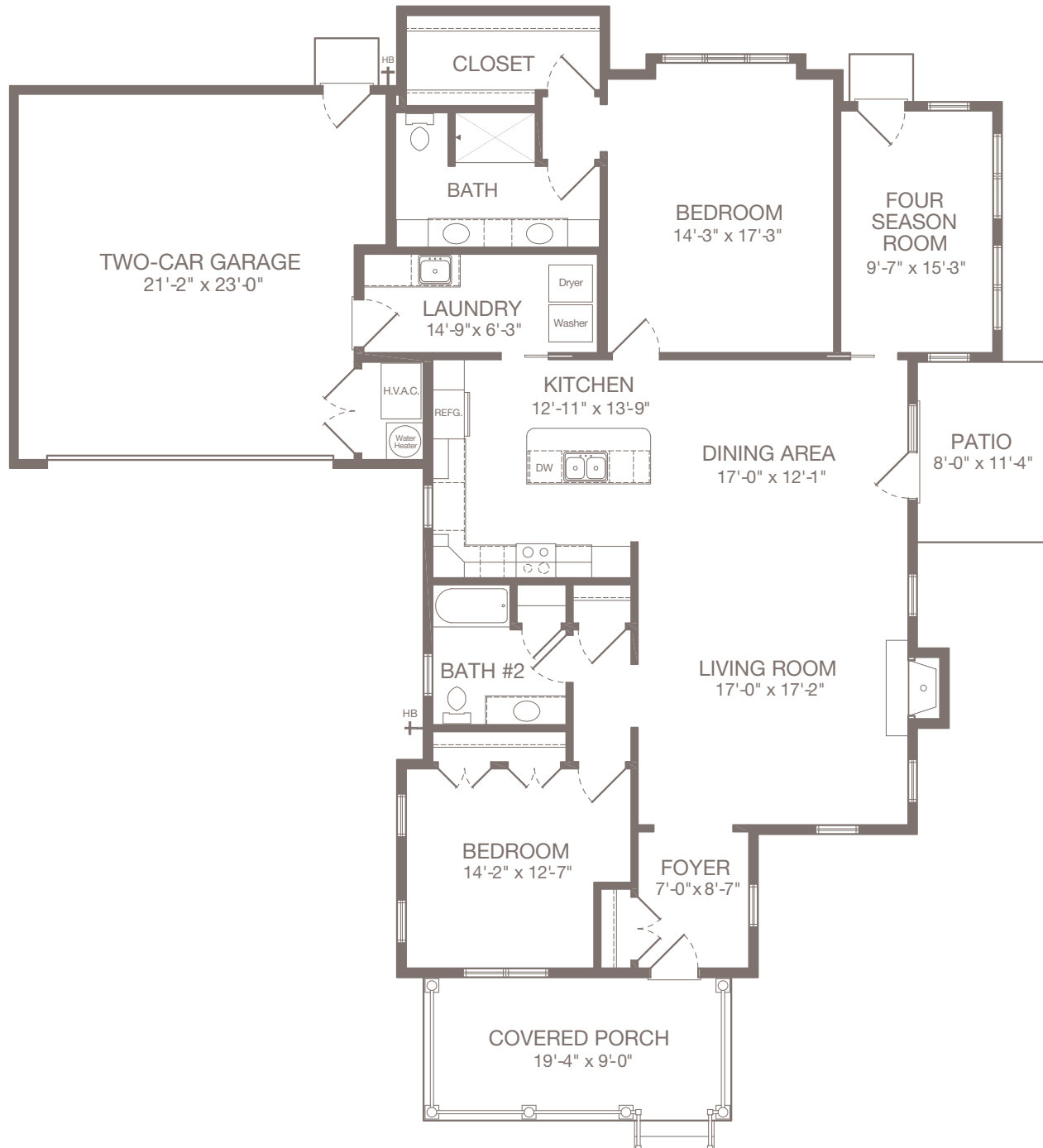
Forester (street facing garage)

1,908 sq. ft., 2 Bedroom / 2 Bath

First Floor living space (with four-season room) = 1,908 sq. ft.

Garage & Mechanicals = 671 sq. ft.

Gross sq. ft. = 2,626



Klein

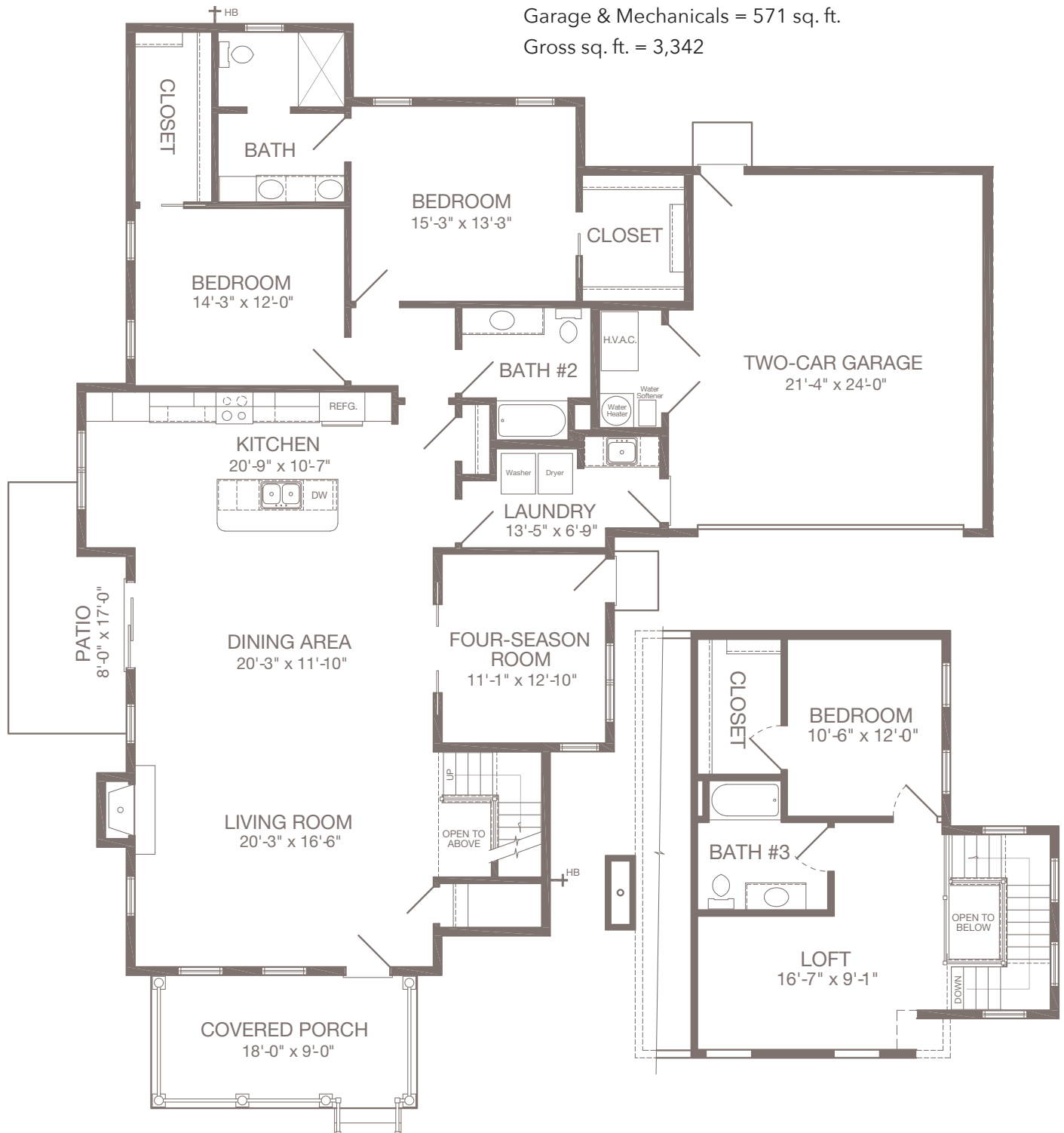
2,771 sq. ft., 3 Bedroom / Loft / 3 Bath

First Floor living space (with four-season room) = 2,060 sq. ft.

Second Floor living space = 711 sq. ft.

Garage & Mechanicals = 571 sq. ft.

Gross sq. ft. = 3,342



Lexington

2,854 sq. ft., 3 Bedroom / Loft / 3 Bath

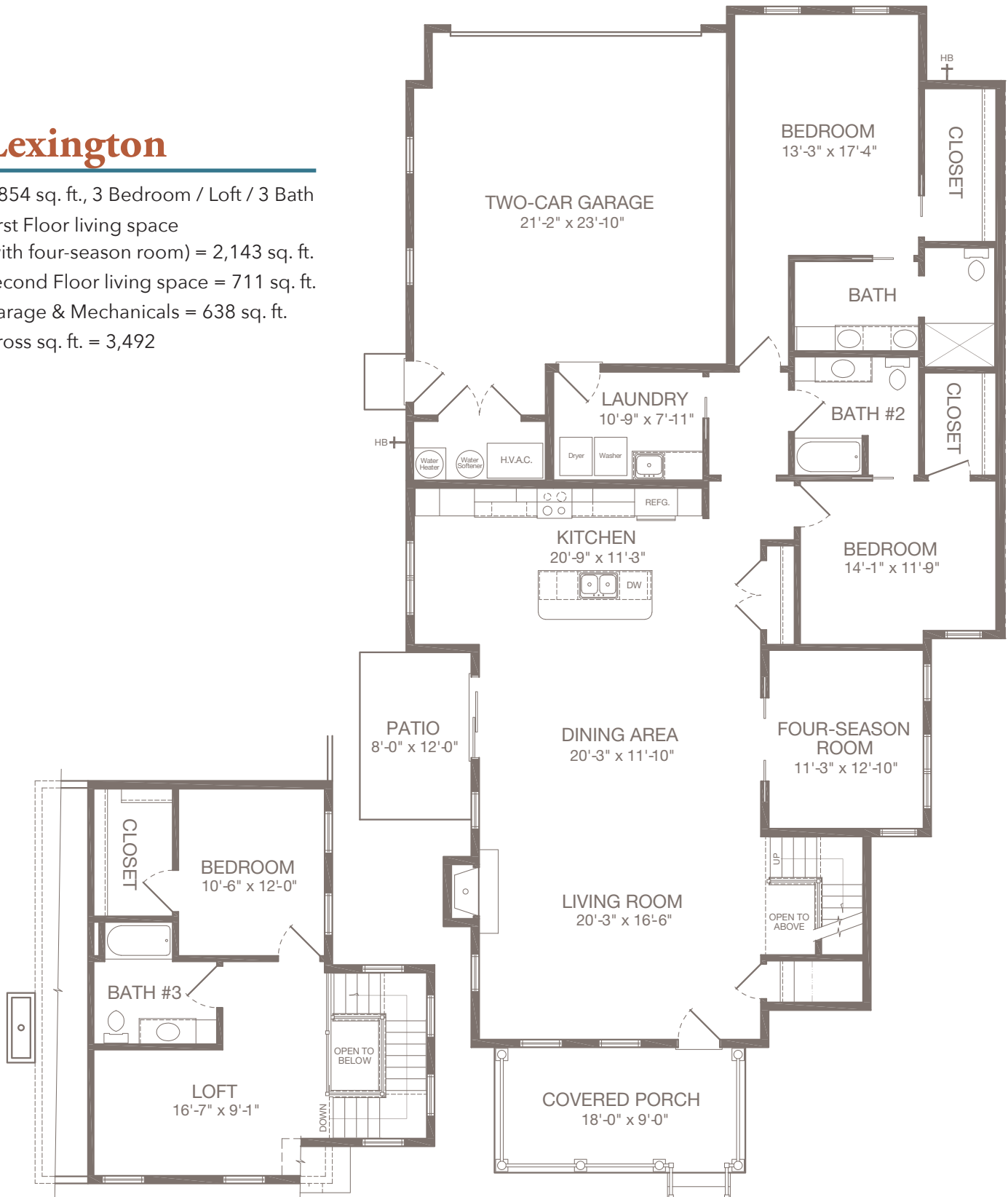
First Floor living space

(with four-season room) = 2,143 sq. ft.

Second Floor living space = 711 sq. ft.

Garage & Mechanicals = 638 sq. ft.

Gross sq. ft. = 3,492



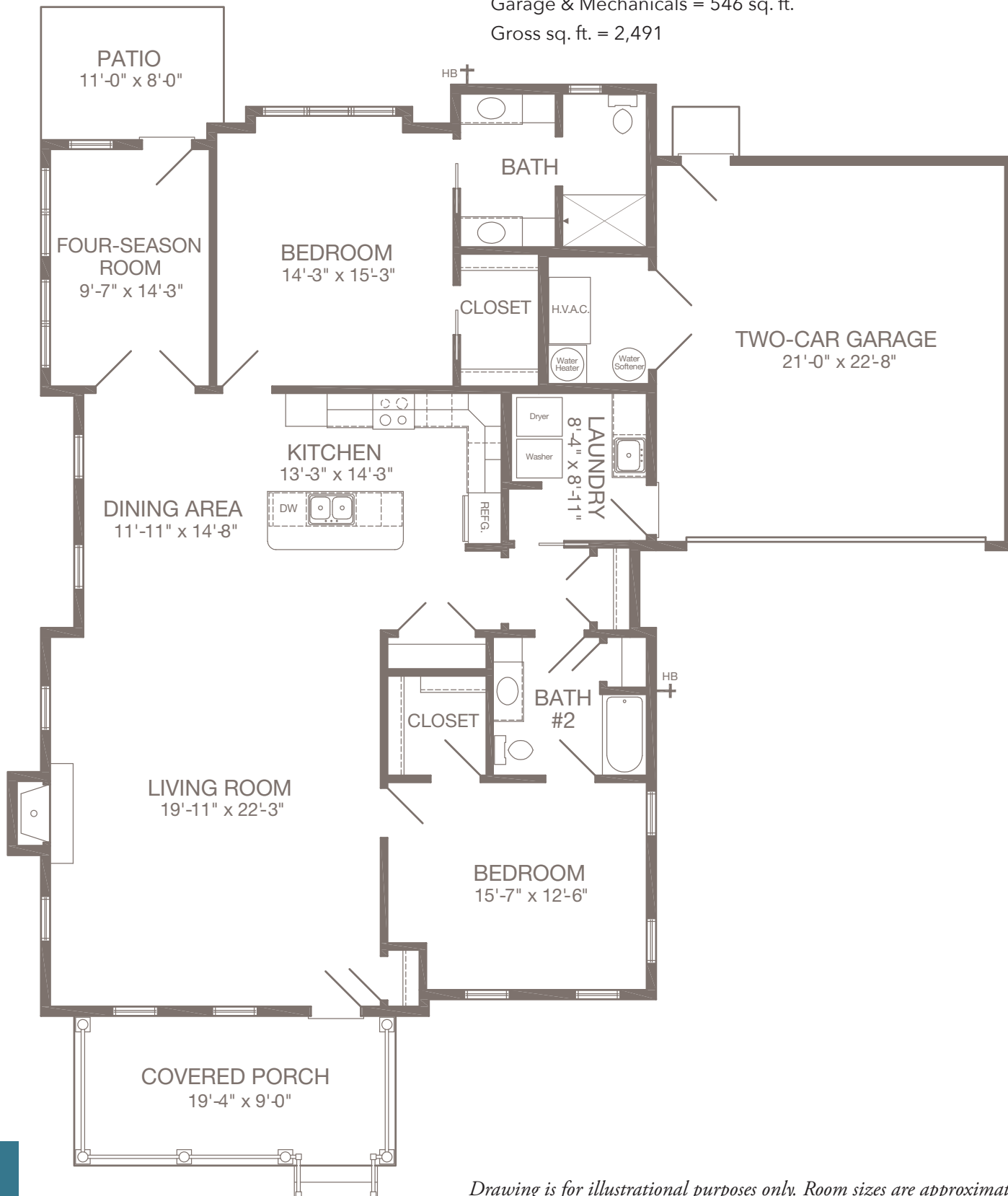
Saxony

1,945 sq. ft., 2 Bedroom / 2 Bath

First Floor living space (with four-season room) = 1,945 sq. ft.

Garage & Mechanicals = 546 sq. ft.

Gross sq. ft. = 2,491



Drawing is for illustrational purposes only. Room sizes are approximate.

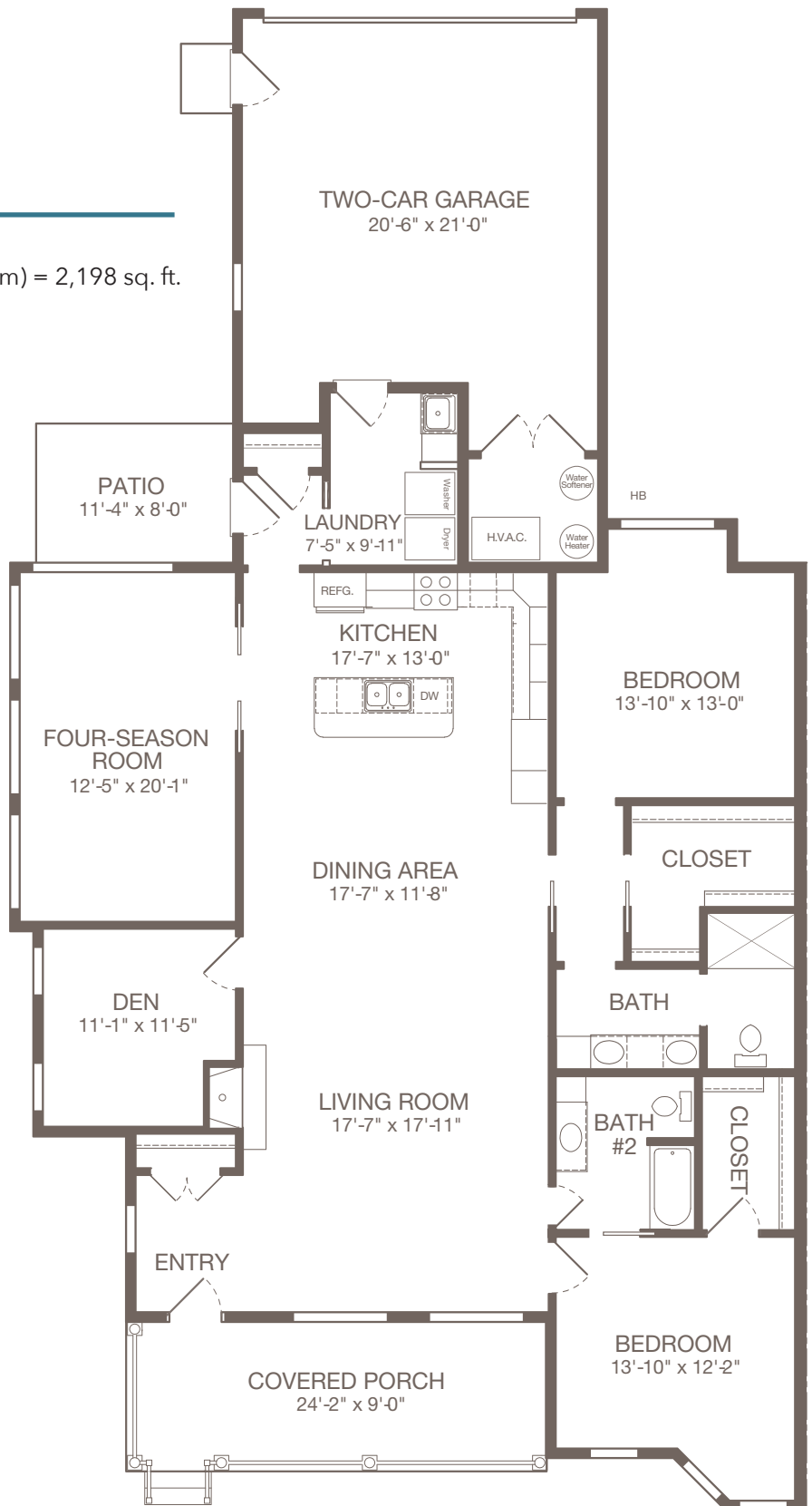
Springs

2,198 sq. ft., 2 Bedroom / Den / 2 Bath

First Floor living space (with four-season room) = 2,198 sq. ft.

Garage & Mechanicals = 555 sq. ft.

Gross sq. ft. = 2,753



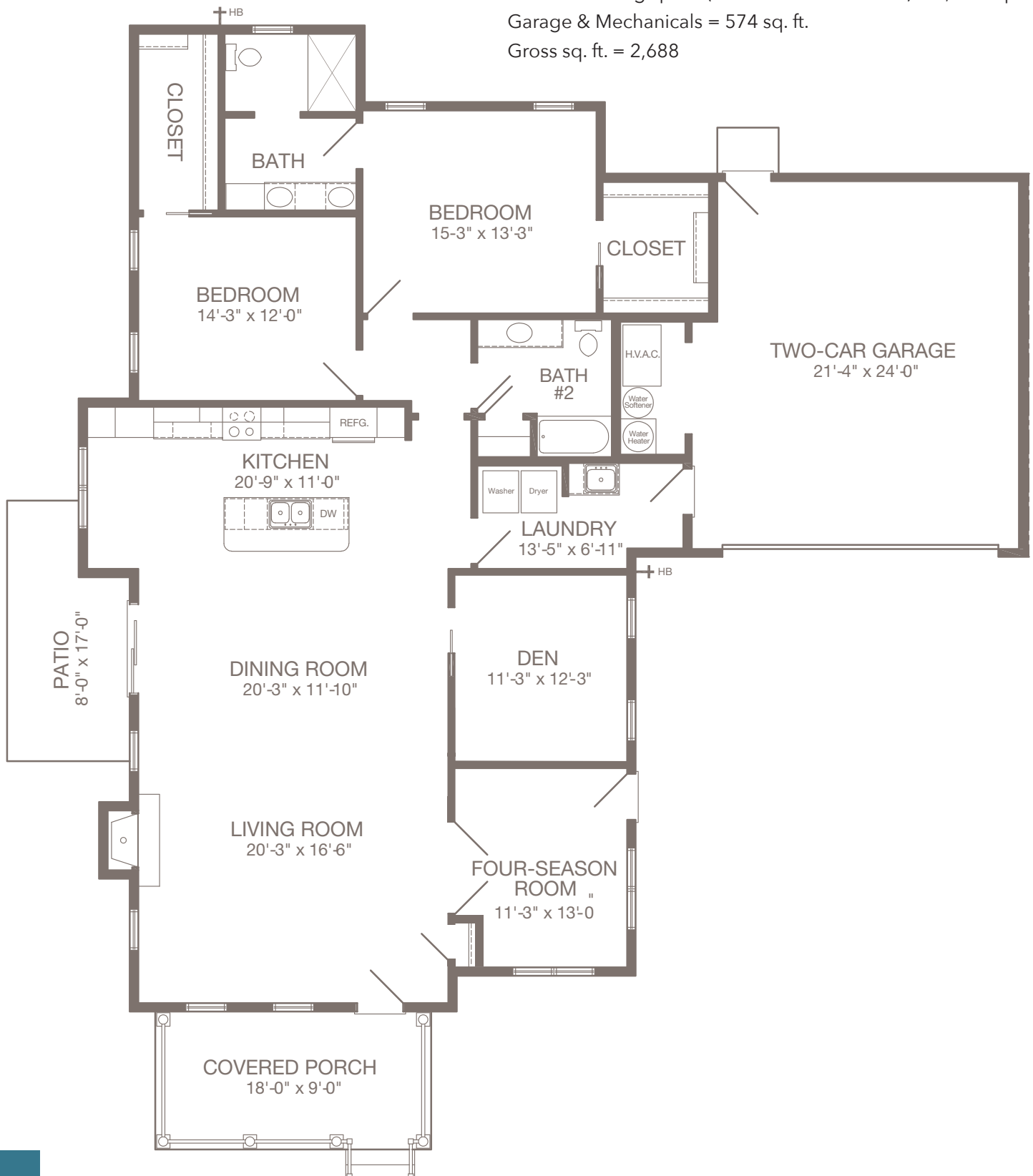
Sturgis

2,114 sq. ft., 2 Bedroom / Den / 2 Bath

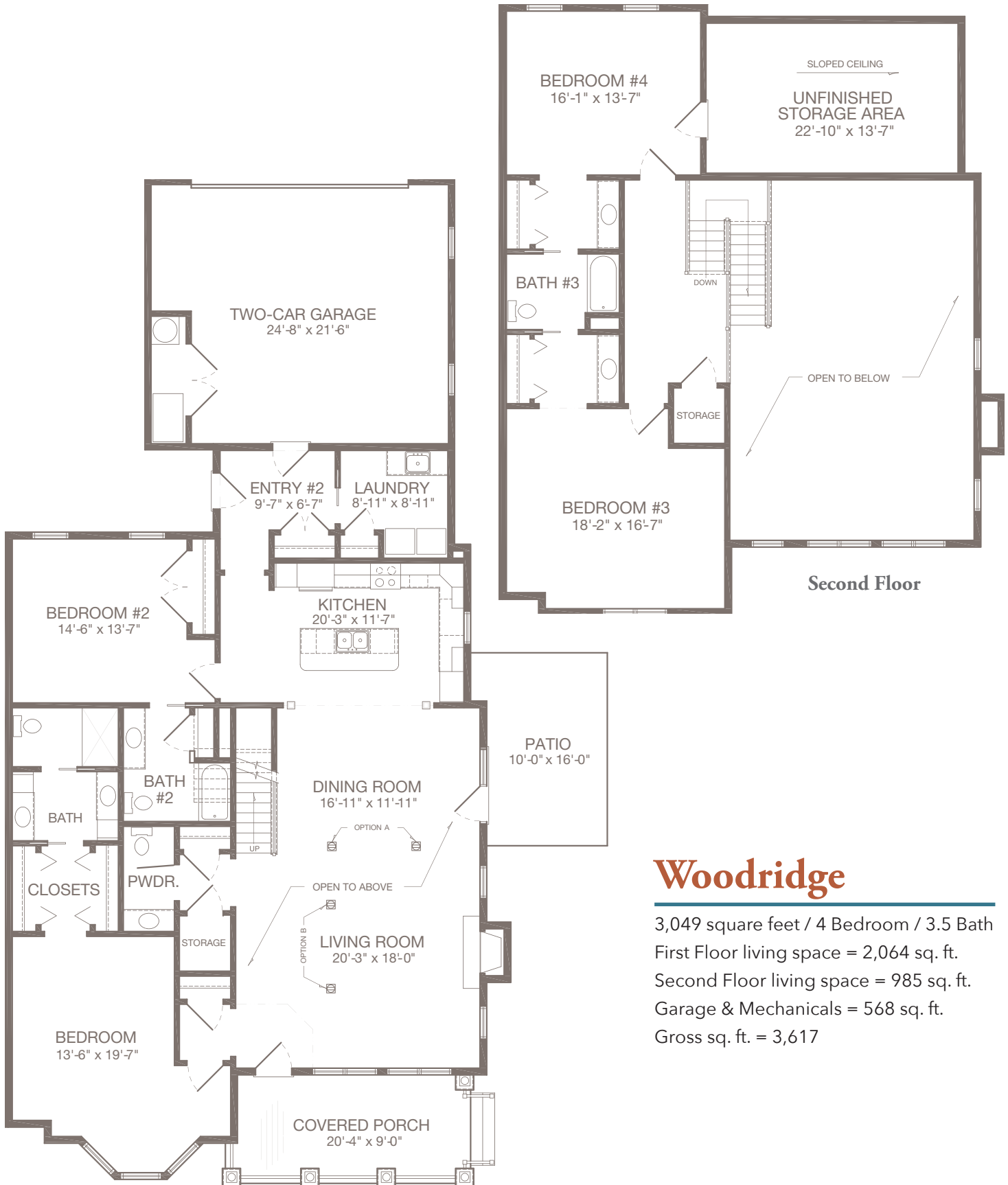
First Floor living space (with four-season room) = 2,114 sq. ft.

Garage & Mechanicals = 574 sq. ft.

Gross sq. ft. = 2,688



Drawing is for illustrational purposes only. Room sizes are approximate.



Woodridge

3,049 square feet / 4 Bedroom / 3.5 Bath
 First Floor living space = 2,064 sq. ft.
 Second Floor living space = 985 sq. ft.
 Garage & Mechanicals = 568 sq. ft.
 Gross sq. ft. = 3,617

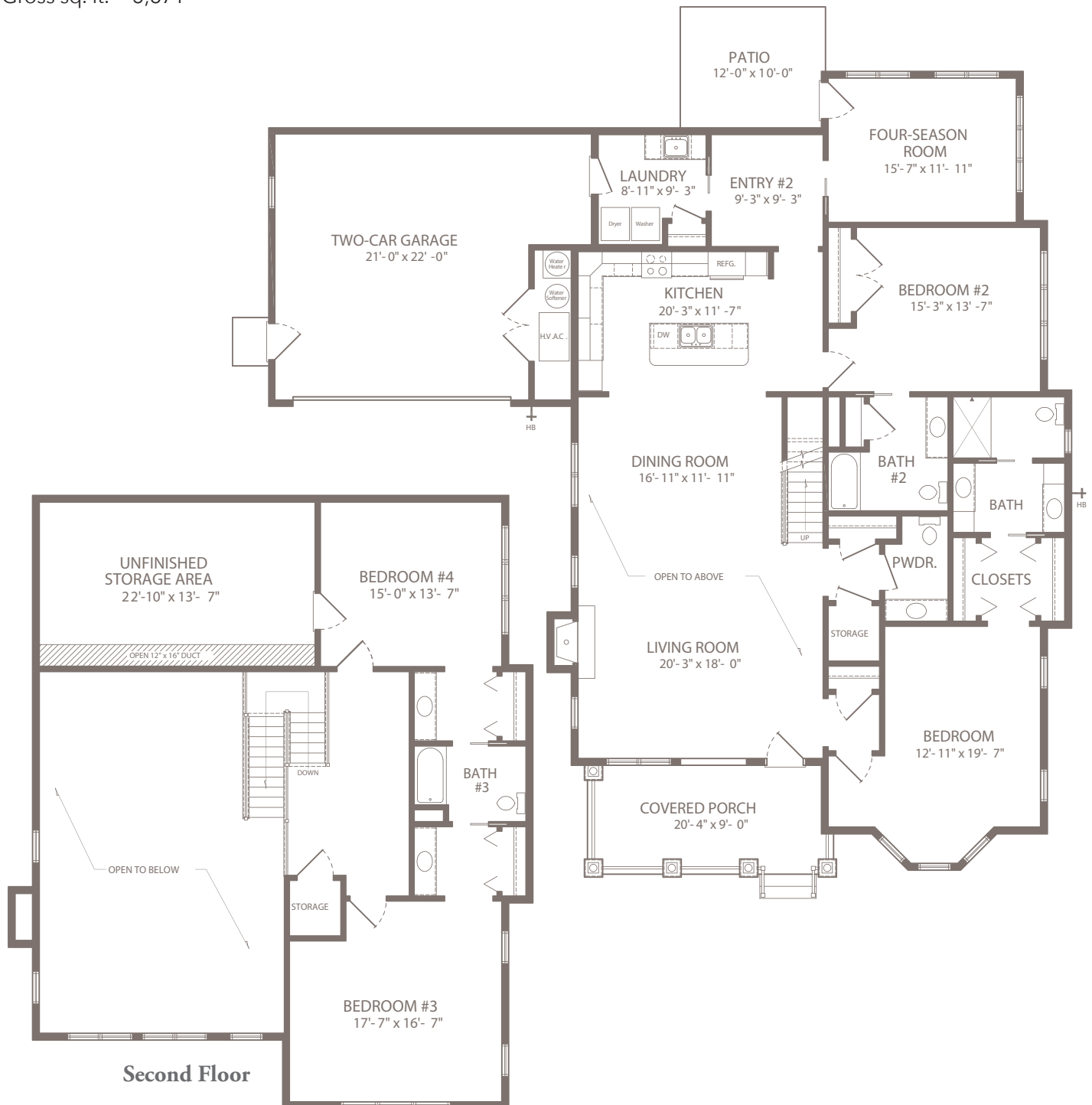
Wilbur

3,280 sq. ft., 4 Bedroom / 3.5 Bath

First Floor living space (with four-season room) = 2,295 sq. ft.

Second Floor living space = 985 sq. ft. Garage & Mechanicals = 591 sq. ft.

Gross sq. ft. = 3,871



Drawing is for illustrational purposes only. Room sizes are approximate.



THE WOODS APARTMENTS

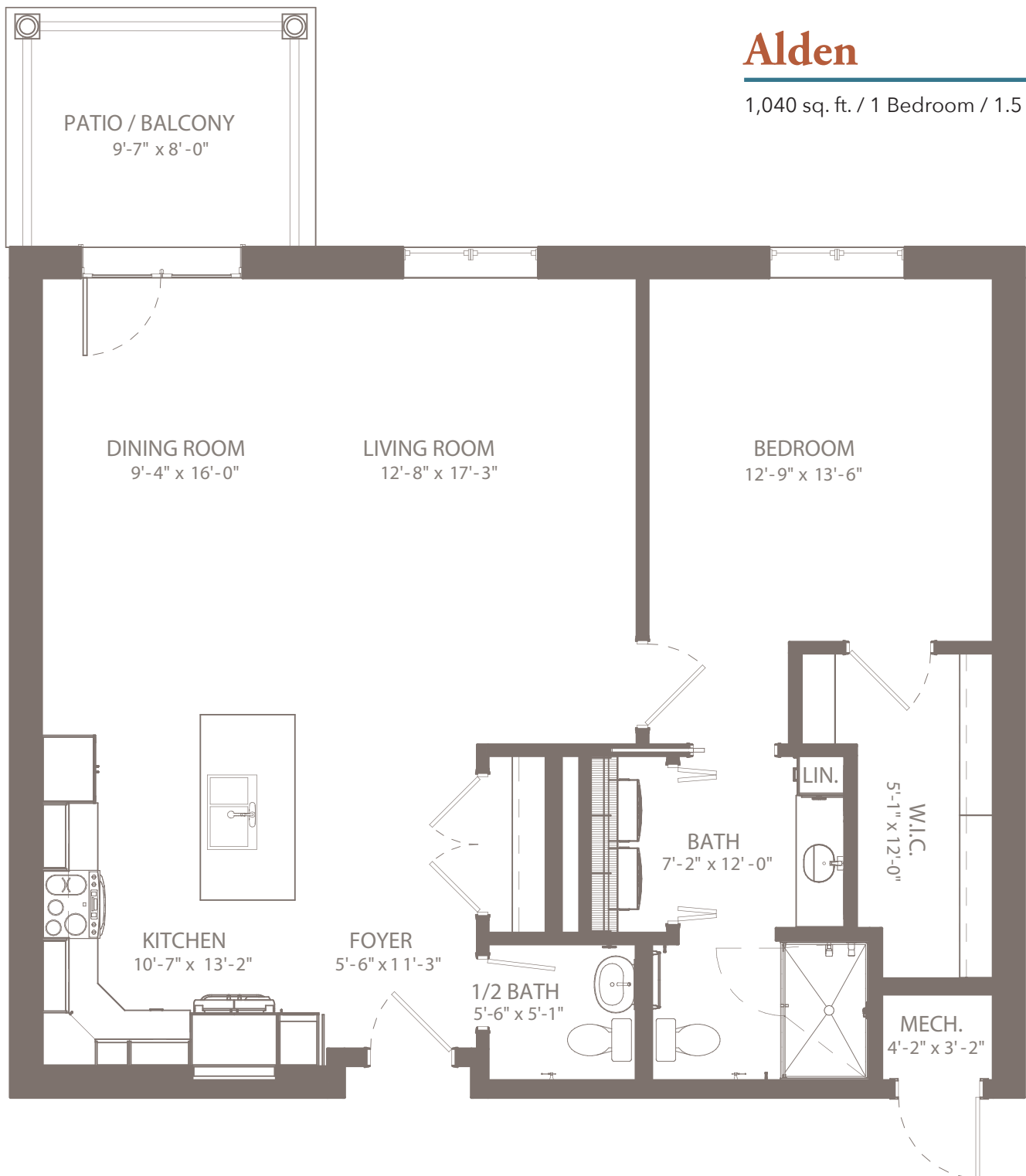
The Woods Apartments, a three-story building centrally located on the Warwick Woodlands Campus, is connected to the Oaks Campus Center for easy access to dining, fitness, socialization, underground parking, and more.

The Woods Apartments include these quality features:

- Open concept living
- Fully equipped kitchen complete with:
 - French door refrigerator with ice maker/water dispenser and bottom freezer
 - Dishwasher
 - Kitchen island with dual sinks
 - Electric glass top stove and oven
 - Microwave
 - Pantry
- En suite bedroom with walk-in closet
- Bathroom that includes:
 - Comfort height toilet
 - Dual sinks
 - Barrier-free shower
 - Linen cabinet
- Powder Room (in most apartments)
- Laundry room complete with full-size side-by-side washer & dryer
- Laundry room utility sink (in most apartments)
- Private patio/balcony
- Underground parking for one car
- Secure storage cage
- Sound baffling between demising walls
- Ample electrical, telephone and cable outlets throughout
- Exterior mechanical access for easy maintenance

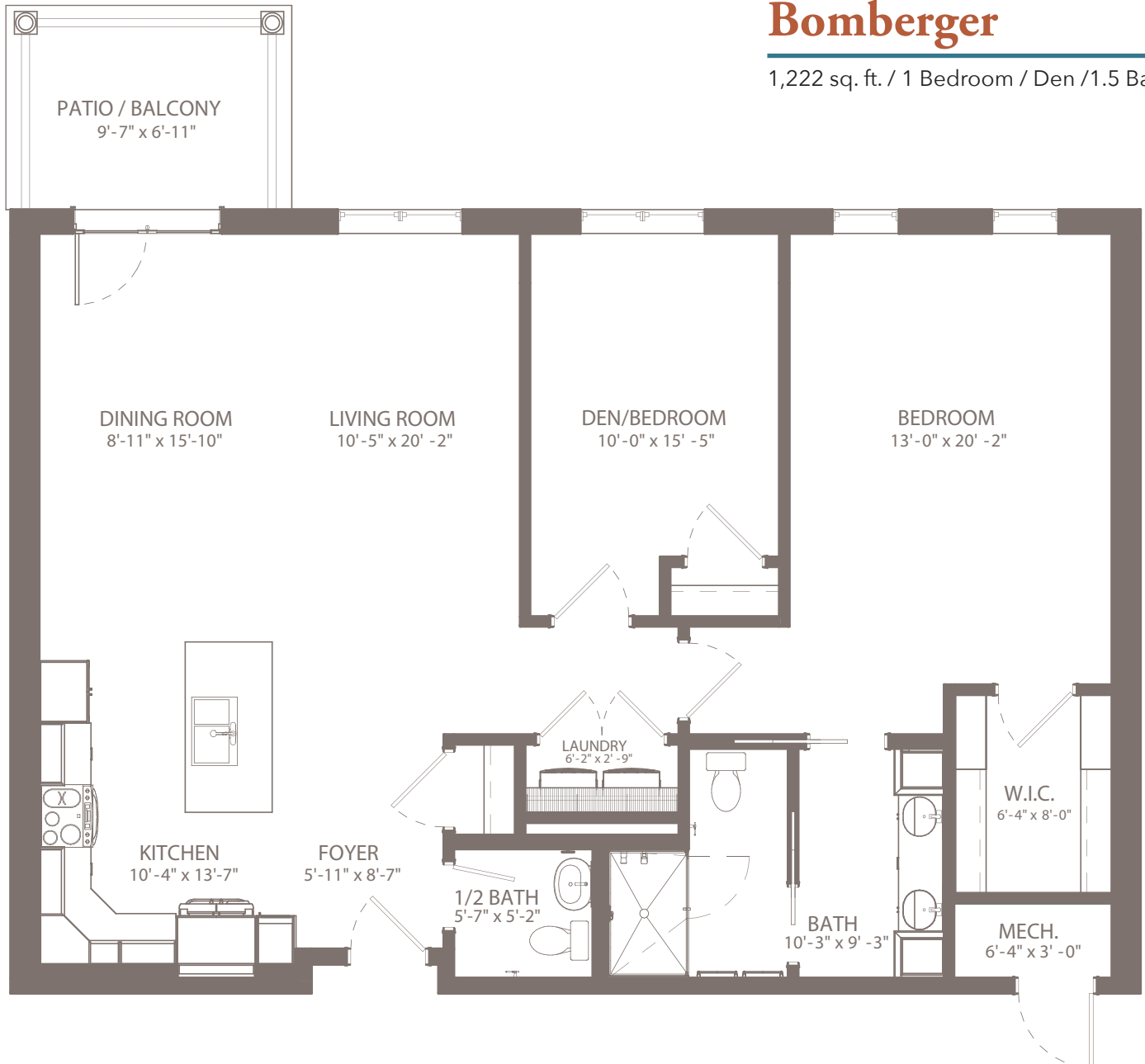
Alden

1,040 sq. ft. / 1 Bedroom / 1.5 Bath



Bomberger

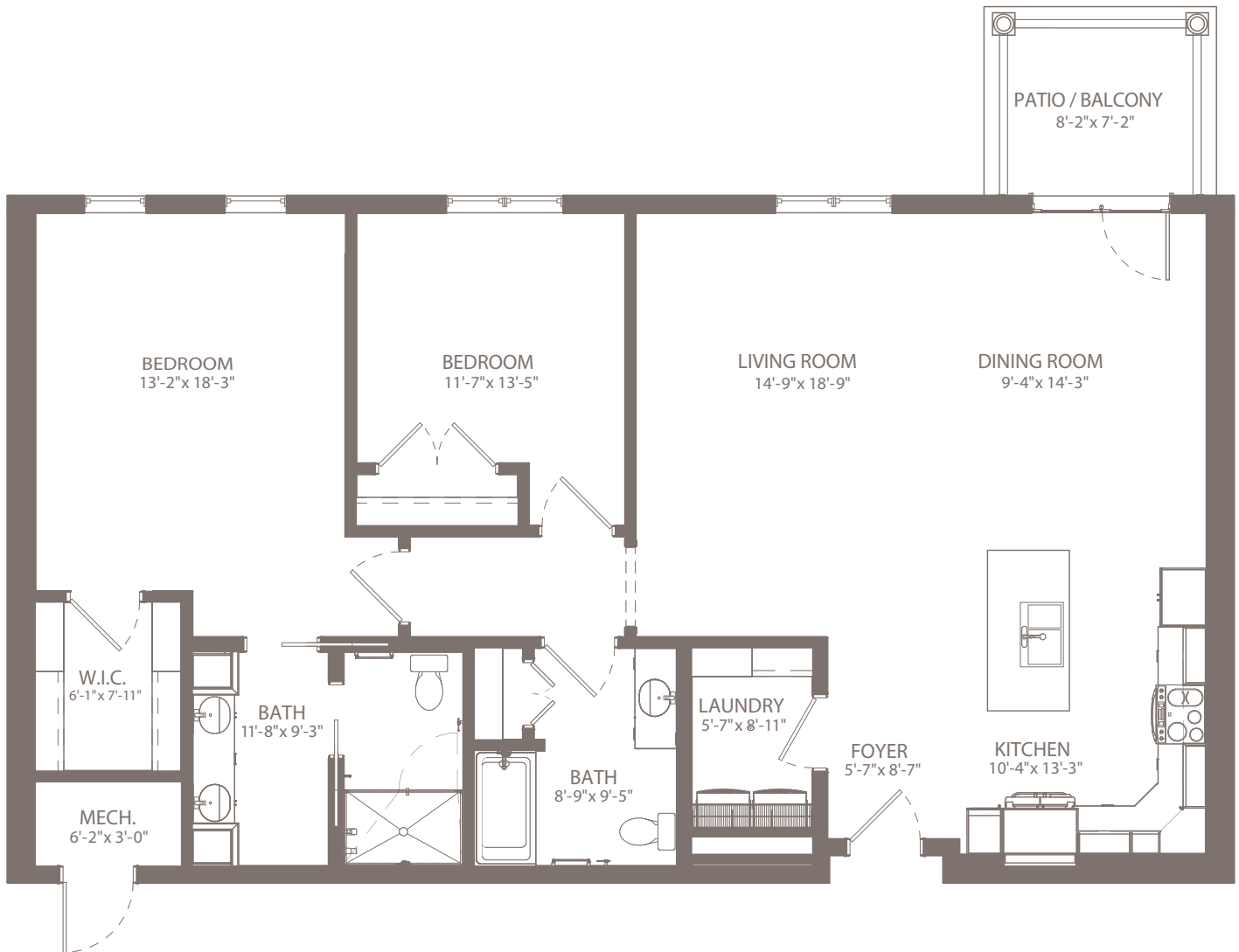
1,222 sq. ft. / 1 Bedroom / Den / 1.5 Bath



Drawing is for illustrational purposes only. Room sizes are approximate.

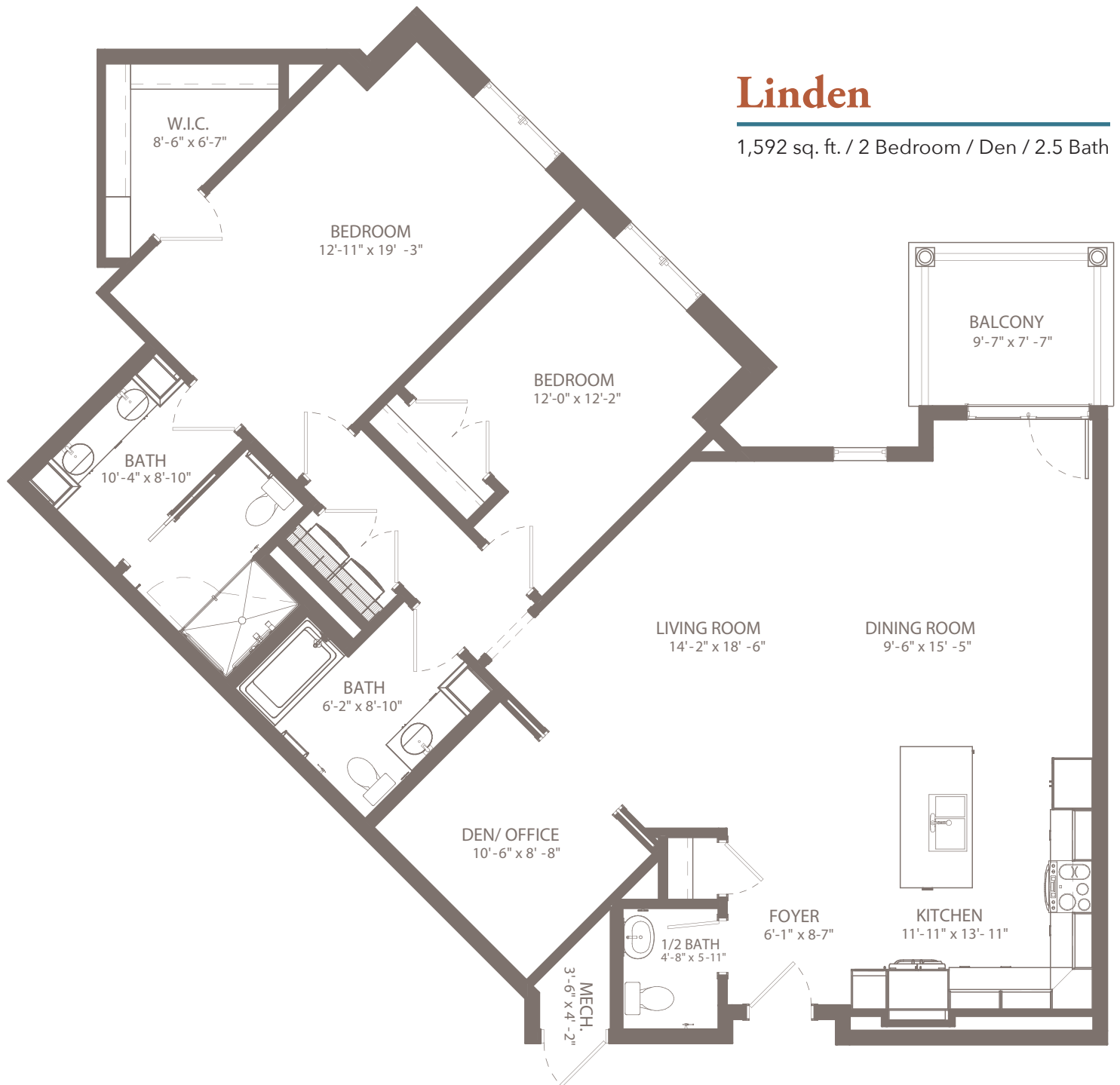
Clair

1,397 sq. ft. / 2 Bedroom / 2 Bath



Linden

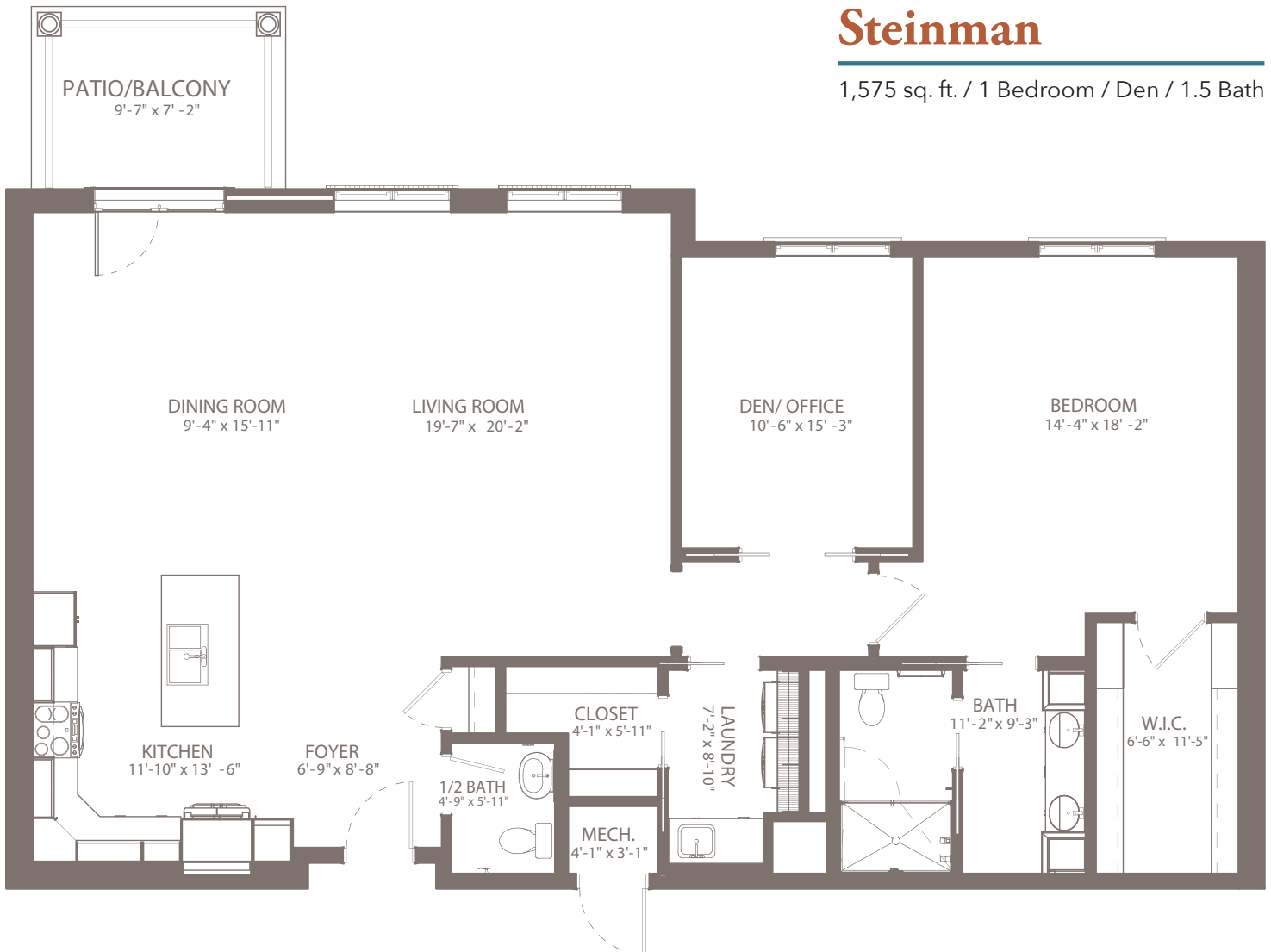
1,592 sq. ft. / 2 Bedroom / Den / 2.5 Bath



Drawing is for illustrational purposes only. Room sizes are approximate.

Steinman

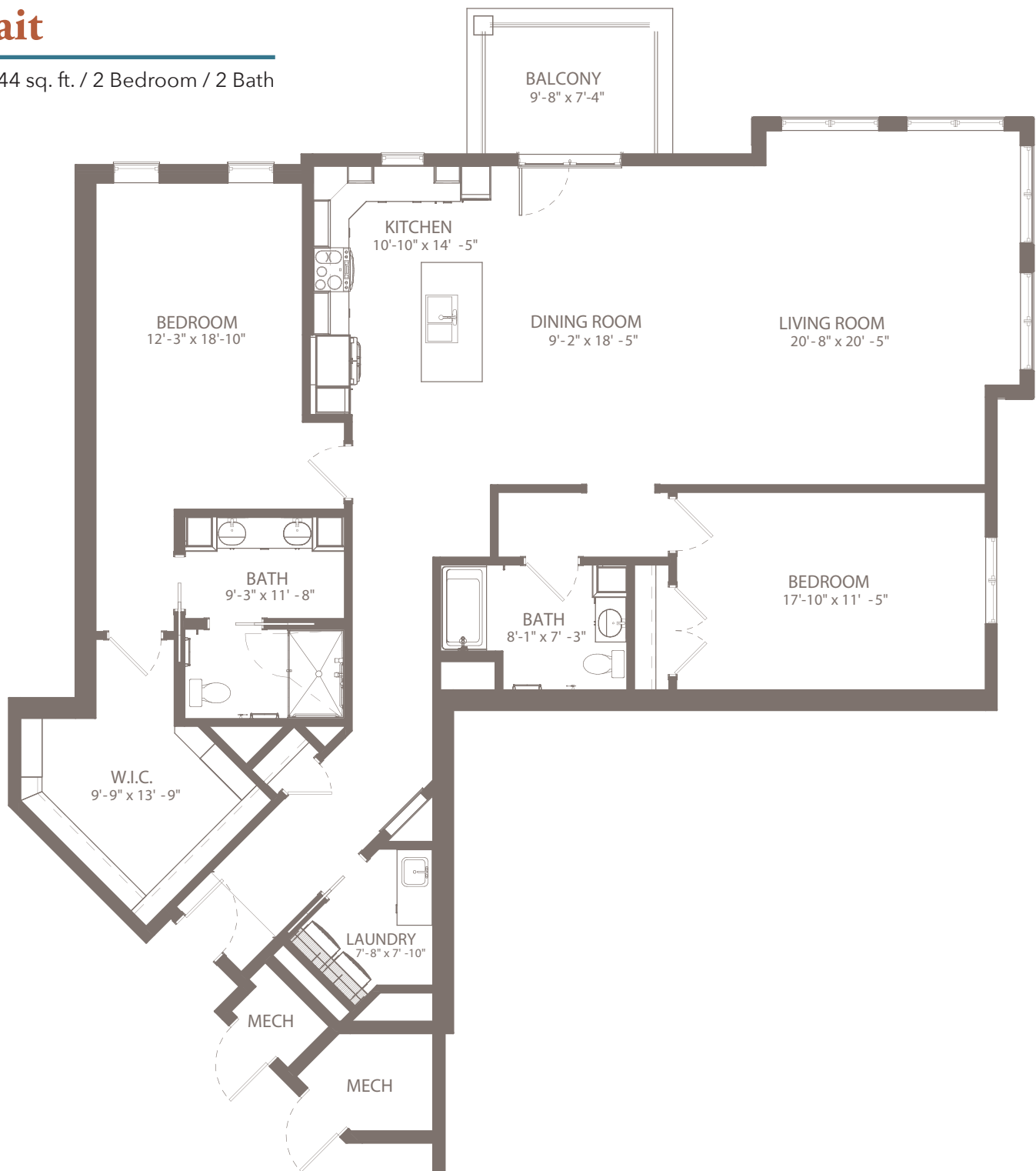
1,575 sq. ft. / 1 Bedroom / Den / 1.5 Bath



THE WOODS APARTMENTS

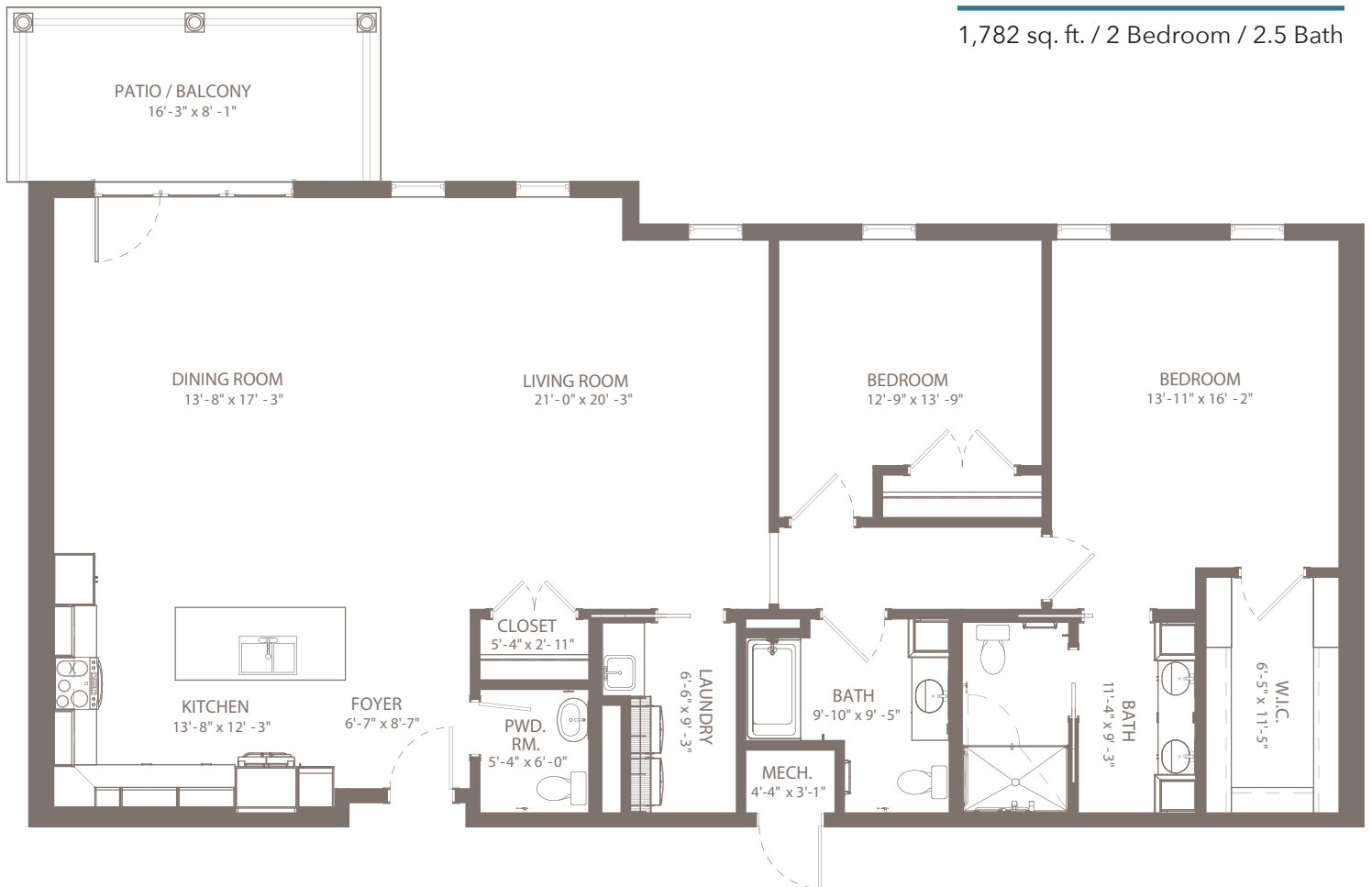
Tait

1,944 sq. ft. / 2 Bedroom / 2 Bath




Zinzendorf

1,782 sq. ft. / 2 Bedroom / 2.5 Bath







MORAVIAN MANOR COMMUNITIES


 moravianmanorcommunities.org


Residential Living Sales Center

WARWICK WOODLANDS CAMPUS

 544 W. 6th Street
Lititz, PA 17543


 717-625-6151


 info@moravianmanor.org


 Open M-F, 8:00 AM-4:30 PM

Administration, Admissions & Health Services

FOUNDERS CAMPUS

 300 W. Lemon Street
Lititz, PA 17543

 717-626-0214

 admissions@moravianmanor.org



TOBACCO
FREE